

Human ELK1 Protein (His & GST Tag)



Sino Biological
Biological Solution Specialist

Catalog Number: 12621-H20B

General Information

Gene Name Synonym:

ELK1

Protein Construction:

A DNA sequence encoding the human ELK1 (P19419-1) (Met 1-Pro 428) was fused with the N-terminal polyhistidine-tagged GST tag at the N-terminus.

Source: Human

Expression Host: Baculovirus-Insect Cells

QC Testing

Purity: > 85 % as determined by SDS-PAGE

Endotoxin:

< 1.0 EU per μg of the protein as determined by the LAL method

Stability:

Samples are stable for up to twelve months from date of receipt at $-70\text{ }^{\circ}\text{C}$

Predicted N terminal: Met

Molecular Mass:

The recombinant human ELK1/GST chimera consists of 665 amino acids and migrates as an approximately 73 kDa band in SDS-PAGE under reducing conditions as predicted.

Formulation:

Lyophilized from sterile 20mM Tris, 500mM NaCl, pH 7.4, 10% gly

Normally 5 % - 8 % trehalose, mannitol and 0.01% Tween80 are added as protectants before lyophilization. Specific concentrations are included in the hardcopy of COA. Please contact us for any concerns or special requirements.

Usage Guide

Storage:

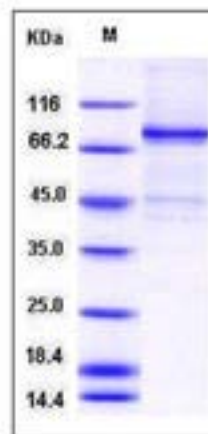
Store it under sterile conditions at $-20\text{ }^{\circ}\text{C}$ to $-80\text{ }^{\circ}\text{C}$ upon receiving. Recommend to aliquot the protein into smaller quantities for optimal storage.

Avoid repeated freeze-thaw cycles.

Reconstitution:

Detailed reconstitution instructions are sent along with the products.

SDS-PAGE:



Protein Description

E twenty-six (ETS)-like transcription factor 1, also known as Elk1 or Member of ETS oncogene family (ELK1), is a member of the ETS oncogene superfamily which is characterized by a common protein domain that regulates DNA binding to target sequences. Elk1 is expressed in the nuclei of non-neuronal cells and function as a transcription activator. It plays important roles in various contexts, including long-term memory formation, drug addiction, Alzheimer's disease, Down syndrome, breast cancer, and depression.

Manufactured By Sino Biological Inc., FOR RESEARCH USE ONLY. NOT FOR USE IN HUMANS.

For US Customer: Fax: 267-657-0217 ● Tel: 215-583-7898

Global Customer: Fax :+86-10-5862-8288 ● Tel:+86-400-890-9989 ● <http://www.sinobiological.com>