

RhoA Antibody (PE), Mouse MAb



Sino Biological
Biological Solution Specialist

Catalog Number: 12441-MM03-P

GENERAL INFORMATION

Immunogen:	Recombinant Human RhoA protein (Catalog#12441-H07B)
Reagents:	PE-conjugated Mouse monoclonal antibody
Preparation	This antibody was produced from a hybridoma resulting from the fusion of a mouse myeloma with B cells obtained from a mouse immunized with purified, recombinant Human RhoA (rh RhoA; Catalog#12441-H07B; P61586-1; Met 1-Leu 193) and conjugated with PE under optimum conditions, the unreacted PE was removed.
Ig Type:	Mouse IgG2a
Clone ID:	03
Specificity:	Human RhoA
Concentration:	10 µl/Test, 0.1 mg/ml
Formulation:	PBS solution containing 0.5% BSA and 0.09% sodium azide
Storage:	This antibody can be stored at 2°C-8°C for twelve months without detectable loss of activity. Protected from prolonged exposure to light. Do not freeze ! Sodium azide is toxic to cells and should be disposed of properly. Flush with large volumes of water during disposal.
Alternative Names:	RHOA

APPLICATIONS

Applications: FCM

RECOMMENDED CONCENTRATION

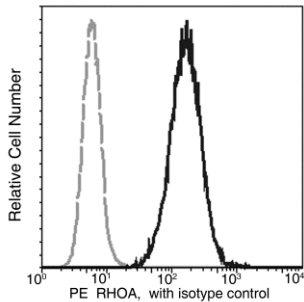
Please Note: Optimal concentrations/dilutions should be determined by the end user.

RhoA Antibody (PE), Mouse MAb



Sino Biological
Biological Solution Specialist

Catalog Number: 12441-MM03-P



Profile of anti-RHOA reactivity on HeLa cells analyzed by flow cytometry. The cells were treated according to manufacturer's manual (BD Pharmingen™ Cat. No. 554714), and stained with PE conjugated Mouse anti-RHOA (12441-MM03-P). The fluorescence histograms were derived from gated events with the forward and side light-scatter characteristics of intact cells.

Flow cytometry was performed on a BD FACSCalibur flow cytometry system. Please refer to www.sinobiological.com/Flow-Cytometry-FACS-Protocols-a-750.html for technical protocols.