

CD33 / Siglec-3 Antibody, Mouse MAb



Sino Biological
Biological Solution Specialist

Catalog Number: 12238-MM06

GENERAL INFORMATION

Immunogen:	Recombinant Human CD33 / Siglec-3 Protein (Catalog#12238-H08H)
Preparation	This antibody was produced from a hybridoma resulting from the fusion of a mouse myeloma with B cells obtained from a mouse immunized with purified, recombinant Human CD33 / Siglec-3 (rh CD33 / Siglec-3; Catalog#12238-H08H; AAH28152.1; Met1-His259). The IgG fraction of the cell culture supernatant was purified by Protein A affinity chromatography.
Ig Type:	Mouse IgG1
Clone ID:	06
Specificity:	Human CD33 / Siglec-3
Formulation:	0.2 µm filtered solution in PBS
Storage:	This antibody can be stored at 2°C-8°C for one month without detectable loss of activity. Antibody products are stable for twelve months from date of receipt when stored at -20°C to -80°C. Preservative-Free. Sodium azide is recommended to avoid contamination (final concentration 0.05%-0.1%). It is toxic to cells and should be disposed of properly. Avoid repeated freeze-thaw cycles.

APPLICATIONS

Applications:	ELISA,FCM
----------------------	-----------

RECOMMENDED CONCENTRATION

Flow Cytometry	FCM: 1:25-1:100
ELISA	ELISA: 1:1000-1:2000 This antibody can be used at 1:1000-1:2000 with the appropriate secondary reagents to detect Human CD33 / Siglec-3.

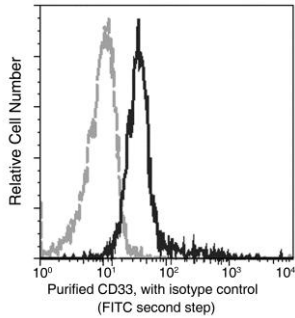
Please Note: Optimal concentrations/dilutions should be determined by the end user.

CD33 / Siglec-3 Antibody, Mouse MAb



Sino Biological
Biological Solution Specialist

Catalog Number: 12238-MM06



Flow cytometric analysis of Human CD33 expression on human whole blood monocytes. Cells were stained with purified anti-Human CD33, then a FITC-conjugated second step antibody. The fluorescence histograms were derived from gated events with the forward and side light-scatter characteristics of viable monocytes.

Flow cytometry was performed on a BD FACSCalibur flow cytometry system. Please refer to www.sinobiological.com/Flow-Cytometry-FACS-Protocols-a-750.html for technical protocols.