

Human Hexosaminidase A / HEXA Protein (Subunit A, His Tag)

Catalog Number: 12037-H08B



Sino Biological
Biological Solution Specialist

General Information

Gene Name Synonym:

TSD

Protein Construction:

A DNA sequence encoding the human HEXA (AAD13932.1) (Met 1-Thr 529) was fused with a polyhistidine tag at the C-terminus.

Source: Human

Expression Host: Baculovirus-Insect Cells

QC Testing

Purity: > 95 % as determined by SDS-PAGE

Bio Activity:

Measured by its ability to hydrolyze 4-methylumbelliferyl-N-acetyl- β -D-glucosaminide (4-MU-Glc-NAc). The specific activity is >1,250 pmoles/min/ μ g.

Endotoxin:

< 1.0 EU per μ g of the protein as determined by the LAL method

Stability:

Samples are stable for up to twelve months from date of receipt at -70 °C

Predicted N terminal: Leu 23

Molecular Mass:

The recombinant human HEXA consists of 517 amino acids and predicts a molecular mass of 59.7 kDa. It migrates as an approximately 64 kDa band in SDS-PAGE under reducing conditions.

Formulation:

Lyophilized from sterile 20mM Tris, 500mM NaCl, pH 7.4

Normally 5 % - 8 % trehalose, mannitol and 0.01% Tween80 are added as protectants before lyophilization. Specific concentrations are included in the hardcopy of COA. Please contact us for any concerns or special requirements.

Usage Guide

Storage:

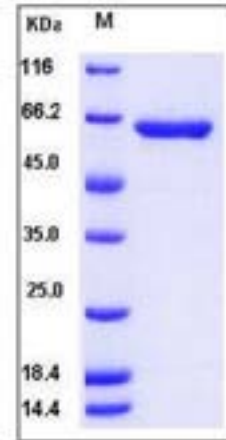
Store it under sterile conditions at -20°C to -80°C upon receiving. Recommend to aliquot the protein into smaller quantities for optimal storage.

Avoid repeated freeze-thaw cycles.

Reconstitution:

Detailed reconstitution instructions are sent along with the products.

SDS-PAGE:



References

1.Norflus,F. et al., 1996, DNA Cell Biol. 15 (2):89-97. 2.Kaufman M., et al., 1997, Hum. Mutat. 10:295-300. 3.Tanaka A., et al., 2003, J. Hum. Genet. 48:571-574.

Manufactured By Sino Biological Inc., FOR RESEARCH USE ONLY. NOT FOR USE IN HUMANS.

For US Customer: Fax: 267-657-0217 ● Tel: 215-583-7898

Global Customer: Fax :+86-10-5862-8288 ● Tel:+86-400-890-9989 ● <http://www.sinobiological.com>