

**Caspase-14 / CASP14 Antibody (PE),
Rabbit MAb**

Catalog Number: 11856-R006-P

EliteRmab® is a registered trademark of Sino Biological Inc.

GENERAL INFORMATION

Immunogen:	Recombinant Human Caspase-14 / CASP14 protein (Catalog#11856-H07E)
Reagents:	PE-conjugated Rabbit monoclonal antibody
Preparation	This antibody was obtained from a rabbit immunized with purified, recombinant Human Caspase-14 / CASP14 (rh Caspase-14 / CASP14; Catalog#11856-H07E; NP_036246.1; Ser 2-Gln 242) and conjugated with PE under optimum conditions, the unreacted PE was removed.
Ig Type:	Rabbit IgG
Clone ID:	006
Specificity:	Human Caspase-14 / CASP14
Concentration:	10 µl/Test, 0.1 mg/ml
Formulation:	Aqueous solution containing 0.5% BSA and 0.1% sodium azide
Storage:	This antibody is stable for 12 months from date of receipt when stored at 2°C-8°C. Protected from prolonged exposure to light. Do not freeze! Sodium azide is toxic to cells and should be disposed of properly. Flush with large volumes of water during disposal.

APPLICATIONS

Applications:	FCM
----------------------	-----

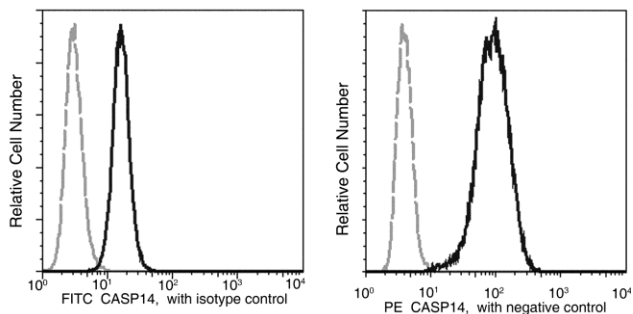
RECOMMENDED CONCENTRATION*Please Note: Optimal concentrations/dilutions should be determined by the end user.*

Caspase-14 / CASP14 Antibody (PE), Rabbit MAb



Catalog Number: 11856-R006-P

EliteRmab® is a registered trademark of Sino Biological Inc.



Human CASP14 expression in HeLa cells. The cells were treated according to manufacturer's manual (BD Pharmingen™ Cat. No. 554714), and stained with PE Rabbit anti-CASP14 (Clone R006). The fluorescence histograms were derived from gated events with the forward and side light-scatter characteristics of intact cells.

Flow cytometry was performed on a BD FACSCalibur flow cytometry system. Please refer to www.sinobiological.com/Flow-Cytometry-FACS-Protocols-a-750.html for technical protocols.