



Catalog Number: 11838-R220

EliteRmab® is a registered trademark of Sino Biological Inc.

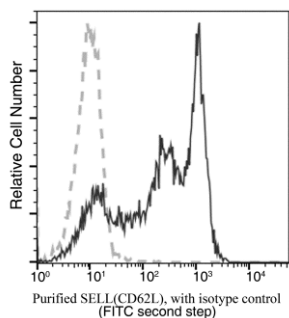
GENERAL INFORMATION	
Immunogen:	Recombinant Human SELL / CD62L Protein (Catalog#11838-H08H)
Preparation	This antibody was obtained from a rabbit immunized with purified, recombinant Human SELL / CD62L (rh SELL / CD62L; Catalog#11838-H08H; P14151-1; Met1-Asn332).
Ig Type:	Rabbit IgG
Clone ID:	220
Specificity:	Human SELL / CD62L
Formulation:	0.2 µm filtered solution in PBS
Storage:	This antibody can be stored at 2°C-8°C for one month without detectable loss of activity. Antibody products are stable for twelve months from date of receipt when stored at -20°C to -80°C. Preservative-Free. Avoid repeated freeze-thaw cycles.
Alternative Names:	CD62L,LAM1,LECAM1,LEU8,LNHR,LSEL,LYAM1,PLNHR,TQ1
APPLICATIONS	
Applications:	FCM
RECOMMENDED CONCENTRATION	
Flow Cytometry	FCM: 1:25-1:100

Please Note: Optimal concentrations/dilutions should be determined by the end user.



Catalog Number: 11838-R220

EliteRmab® is a registered trademark of Sino Biological Inc.



Flow cytometric analysis of Human SELL(CD62L) expression on human whole blood lymphocytes. Cells were stained with purified anti-Human SELL(CD62L), then a FITC-conjugated second step antibody. The fluorescence histograms were derived from gated events with the forward and side light-scatter characteristics of viable lymphocytes.

Flow cytometry was performed on a BD FACSCalibur flow cytometry system. Please refer to www.sinobiological.com/Flow-Cytometry-FACS-Protocols-a-750.html for technical protocols.