

**Syndecan-1/SDC1 Antibody (PerCP),
Rabbit MAb**

Catalog Number: 11429-R017-C

EliteRmab® is a registered trademark of Sino Biological Inc.

GENERAL INFORMATION	
Immunogen:	Recombinant Human Syndecan-1/SDC1 Protein (Catalog#11429-H08H)
Reagents:	PerCP-conjugated Rabbit monoclonal antibody
Preparation	This antibody was obtained from a rabbit immunized with purified, recombinant Human Syndecan-1/SDC1 (rh Syndecan-1/SDC1; Catalog#11429-H08H; NP_002988.3; Met1-Glu251) and conjugated with PerCP under optimum conditions, the unreacted PerCP was removed.
Ig Type:	Rabbit IgG
Clone ID:	017
Specificity:	Human Syndecan-1/SDC1
Concentration:	10 µl/Test, 0.1 mg/ml
Formulation:	Aqueous solution containing 0.5% BSA and 0.03%ProClin300
Storage:	This antibody can be stored at 2°C-8°C for twelve months without detectable loss of activity. Protected from prolonged exposure to light. Do not freeze !
Alternative Names:	CD138,SDC,SYND1,syndecan,Syndecan-1
APPLICATIONS	
Applications:	FCM

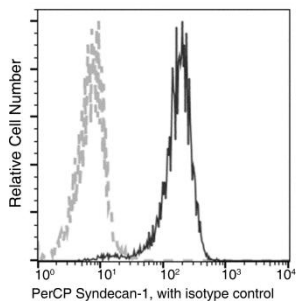
Please Note: Optimal concentrations/dilutions should be determined by the end user.

Syndecan-1/SDC1 Antibody (PerCP), Rabbit MAb



Catalog Number: 11429-R017-C

EliteRmab® is a registered trademark of Sino Biological Inc.



Flow cytometric analysis of Human Syndecan-1 expression on RPMI8226 cells. Cells were stained with PerCP-conjugated anti-Human Syndecan-1. The fluorescence histograms were derived from gated events with the forward and side light-scatter characteristics of intact cells.

Flow cytometry was performed on a BD FACSCalibur flow cytometry system. Please refer to www.sinobiological.com/Flow-Cytometry-FACS-Protocols-a-750.html for technical protocols.