

OSMR / IL-31RB Antibody, Rabbit MAb

Catalog Number: 11226-R002

EliteRmab® is a registered trademark of Sino Biological Inc.

GENERAL INFORMATION	
Immunogen:	Recombinant Human OSMR / IL-31RB protein (Catalog#11226-H08H)
Preparation	This antibody was obtained from a rabbit immunized with purified, recombinant Human OSMR / IL-31RB (rh OSMR / IL-31RB; Catalog#11226-H08H; NP_003990.1; Met1-Met740).
Ig Type:	Rabbit IgG
Clone ID:	002
Specificity:	Human OSMR / IL-31RB
Formulation:	0.2 µm filtered solution in PBS
Storage:	This antibody can be stored at 2°C-8°C for one month without detectable loss of activity. Antibody products are stable for twelve months from date of receipt when stored at -20°C to -80°C. Preservative-Free. Avoid repeated freeze-thaw cycles.
APPLICATIONS	
Applications:	ELISA(Cap),FCM
RECOMMENDED CONCENTRATION	
Flow Cytometry	FCM: 1:25-1:100
Sandwich ELISA (Capture Ab)	ELISA(Cap): 1:250-1:2000 This antibody will detect Human OSMR / IL-31RB in ELISA pair set (Catalog: # SEK11226). In a sandwich ELISA, it can be used as capture antibody when paired with (Catalog: # 11226-MM01).

Please Note: Optimal concentrations/dilutions should be determined by the end user.

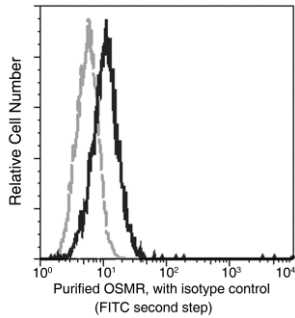
OSMR / IL-31RB Antibody, Rabbit MAb

Catalog Number: 11226-R002



Sino Biological
Biological Solution Specialist

EliteRmab® is a registered trademark of Sino Biological Inc.



Flow cytometric analysis of Human OSMR expression on HeLa cells. Cells were stained with purified anti-Human OSMR, then a FITC-conjugated second step antibody. The histogram were derived from gated events with the forward and side light-scatter characteristics of intact cells.

Flow cytometry was performed on a BD FACSCalibur flow cytometry system. Please refer to www.sinobiological.com/Flow-Cytometry-FACS-Protocols-a-750.html for technical protocols.