



Catalog Number: 11145-R018

EliteRmab® is a registered trademark of Sino Biological Inc.

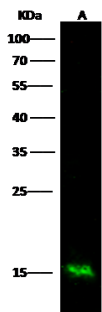
GENERAL INFORMATION	
Immunogen:	Recombinant Human S100A9 Protein (Catalog#11145-HNAE)
Preparation	This antibody was obtained from a rabbit immunized with purified, recombinant Human S100A9 (rh S100A9; Catalog#11145-HNAE; NP_002956.1; Met 1-Pro 114) .
Ig Type:	Rabbit IgG
Clone ID:	018
Specificity:	Human S100A9
	No cross-reactivity in ELISA with Human S100A13 Human S100A1 Human S100A2 Human S100A7 Human S100A8 Mouse S100A6
Formulation:	0.2 µm filtered solution in PBS
Storage:	This antibody can be stored at 2°C-8°C for one month without detectable loss of activity. Antibody products are stable for twelve months from date of receipt when stored at -20°C to -80°C. Preservative-Free. Sodium azide is recommended to avoid contamination (final concentration 0.05%-0.1%). It is toxic to cells and should be disposed of properly. Avoid repeated freeze-thaw cycles.
APPLICATIONS	
Applications:	WB,ELISA
RECOMMENDED CONCENTRATION	
Western Blot	WB: 1:500-1:2000
ELISA	ELISA: 1:5000-1:10000 This antibody can be used at 1:5000-1:10000 with the appropriate secondary reagents to detect Human S100A9.

Please Note: Optimal concentrations/dilutions should be determined by the end user.



Catalog Number: 11145-R018

EliteRmab® is a registered trademark of Sino Biological Inc.



Anti-S100A9 rabbit monoclonal antibody at
1:500 dilution

Lane A: HL-60 Whole Cell Lysate

Lysates/proteins at 30 µg per lane.

Secondary

Goat Anti-Rabbit IgG H&L (Dylight800) at
1/10000 dilution.

Developed using the Odyssey technique.
Performed under reducing conditions.

Predicted band size:13 kDa

Observed band size:15 kDa