

Human Insulin Receptor / INSR / CD220 Protein (His & GST Tag)

Catalog Number: 11081-H20B1



Sino Biological
Biological Solution Specialist

General Information

Gene Name Synonym:

CD220; HHF5; Insulin Receptor

Protein Construction:

A DNA sequence encoding the human INSR isoform long (NP_000199.2) cytoplasmic domain (Gly 989-Ser 1382) was fused with the N-terminal polyhistidine-tagged GST tag at the N-terminus.

Source: Human

Expression Host: Baculovirus-Insect Cells

QC Testing

Purity: > 92 % as determined by SDS-PAGE

Bio Activity:

The specific activity was determined to be 45 nmol/min/mg using Poly(Ala,Glu,Lys,Tyr)_{6:2:5:1} as substrate.

Endotoxin:

< 1.0 EU per µg of the protein as determined by the LAL method

Stability:

Samples are stable for up to twelve months from date of receipt at -70 °C

Predicted N terminal: Met

Molecular Mass:

The recombinant human INSR (989-1382)/GST chimera consists of 631 amino acids and has a calculated molecular mass of 72.3 KDa. It migrates as an approximately 70 KDa band in SDS-PAGE under reducing conditions.

Formulation:

Supplied as sterile 50mM Tris, 100mM NaCl, pH 7.4, 20% gly, 0.3mM DTT

Normally 5 % - 8 % trehalose, mannitol and 0.01% Tween80 are added as protectants before lyophilization. Specific concentrations are included in the hardcopy of COA. Please contact us for any concerns or special requirements.

Usage Guide

Storage:

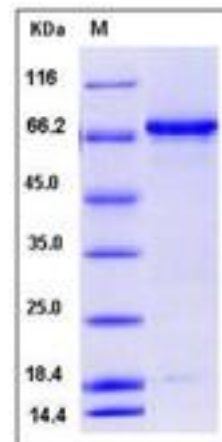
Store it under sterile conditions at -20°C to -80°C upon receiving. Recommend to aliquot the protein into smaller quantities for optimal storage.

Avoid repeated freeze-thaw cycles.

Reconstitution:

Detailed reconstitution instructions are sent along with the products.

SDS-PAGE:



Protein Description

INSR (Insulin receptor), also known as CD220, is a transmembrane receptor that is activated by insulin. INSR belongs to the protein kinase superfamily, and exists as a tetramer consisting of two alpha subunits and two beta subunits linked by disulfide bonds. The alpha and beta subunits are encoded by a single INSR gene, and the beta subunits pass through the cellular membrane. As the receptor for insulin with tyrosine-protein kinase activity, INSR associates with downstream mediators upon binding to insulin, including IRS1 (insulin receptor substrate 1) and phosphatidylinositol 3'-kinase (PI3K). IRS-1 binding and phosphorylation eventually leads to an increase in the high affinity glucose transporter (Glut4) molecules on the outer membrane of insulin-responsive tissues. INSR isoform long and isoform short are expressed in the peripheral nerve, kidney, liver, striated muscle, fibroblasts and skin, and is found as a hybrid receptor with IGF1R which also binds IGF1 in muscle, heart, kidney, adipose tissue, skeletal muscle, hepatoma, fibroblasts, spleen and placenta. Defects in Insulin Receptor/INSR are the cause of Rabson-Mendenhall syndrome (Mendenhall syndrome), insulin resistance (Ins resistance), leprechaunism (Donohue syndrome), and familial hyperinsulinemic hypoglycemia 5 (HHF5). It may also be associated with noninsulin-dependent diabetes mellitus (NIDDM).

References

1. Ebin Y., *et al.*, (1985), The human insulin receptor cDNA: the structural basis for hormone-activated transmembrane signalling. *Cell* 40:747-758.
2. Ulrich A., *et al.*, (1985), Human insulin receptor and its relationship to the tyrosine kinase family of oncogenes. *Nature* 313:756-761.
3. Grimwood J., *et al.*, (2004), The DNA sequence and biology of human chromosome 19. *Nature* 428:529-535.

Manufactured By Sino Biological Inc., FOR RESEARCH USE ONLY. NOT FOR USE IN HUMANS.

For US Customer: Fax: 267-657-0217

• Tel: 215-583-7898

Global Customer: Fax :+86-10-5862-8288

• Tel:+86-400-890-9989

• <http://www.sinobiological.com>