

# SR-BI/SCARB1/CD36L1 Antibody, Rabbit PAb, Antigen Affinity Purified



Sino Biological  
Biological Solution Specialist

Catalog Number: 11069-T38

GENERAL INFORMATION	
<b>Immunogen:</b>	Recombinant Human SR-BI/SCARB1/CD36L1 Protein (Catalog#11069-H08H)
<b>Preparation</b>	Produced in rabbits immunized with purified, recombinant Human SR-BI/SCARB1/CD36L1 (rh SR-BI/SCARB1/CD36L1; Catalog#11069-H08H; NP_005496.4; Pro33-Tyr443). SR-BI/SCARB1/CD36L1 specific IgG was purified by Human SR-BI/SCARB1/CD36L1 affinity chromatography.
<b>Ig Type:</b>	Rabbit IgG
<b>Specificity:</b>	Human SR-BI/SCARB1/CD36L1
<b>Formulation:</b>	0.2 µm filtered solution in PBS
<b>Storage:</b>	This antibody can be stored at 2°C-8°C for one month without detectable loss of activity. Antibody products are stable for twelve months from date of receipt when stored at -20°C to -80°C. Preservative-Free. Avoid repeated freeze-thaw cycles.
<b>Alternative Names:</b>	CD36L1,CLA-1,CLA1,HDLQTL6,SR-BI,SRB1
APPLICATIONS	
<b>Applications:</b>	WB,ICC/IF,IP
RECOMMENDED CONCENTRATION	
<b>ICC/IF</b>	ICC/IF: 1:1500-1:50000
<b>Western Blot</b>	WB: 1:500-1:1000
<b>Immunoprecipitation</b>	IP: 0.2-1 µL/mg of lysate

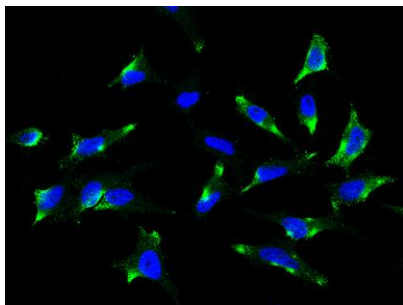
**Please Note: Optimal concentrations/dilutions should be determined by the end user.**

# SR-BI/SCARB1/CD36L1 Antibody, Rabbit PAb, Antigen Affinity Purified

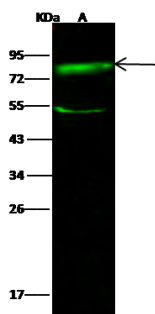


Sino Biological  
Biological Solution Specialist

Catalog Number: 11069-T38



Immunofluorescence staining of SRB1 in HeLa cells. Cells were fixed with 4% PFA, permeabilized with 0.3% Triton X-100 in PBS, blocked with 10% serum, and incubated with rabbit anti-human SRB1 polyclonal antibody (1:5000) at 4°C overnight. Then cells were stained with the Alexa Fluor<sup>®</sup>488-conjugated Goat Anti-rabbit IgG secondary antibody (green) and counterstained with DAPI (blue). Positive staining was localized to cell membrane and cytoplasm.



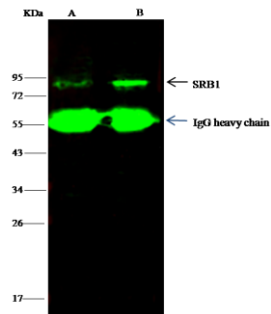
Anti-SRB1 rabbit polyclonal antibody at 1:500 dilution  
Lane A: HepG2 Whole Cell Lysate

Lysates/proteins at 30 µg per lane.

Secondary  
Goat Anti- Rabbit IgG H&L (Dylight 800) at 1/10000 dilution.

Developed using the Odyssey technique.  
Performed under reducing conditions.

Predicted band size: 60 kDa  
Observed band size: 81 kDa (We are unsure as to the identity of these extra bands.)



SRB1 was immunoprecipitated using:  
Lane A: 0.5 mg HeLa Whole Cell Lysate  
Lane B: 0.5 mg HepG2 Whole Cell Lysate

1 µL anti-SRB1 rabbit polyclonal antibody and 15 µL of 50% Protein G agarose.

Primary antibody:  
Anti-SRB1 rabbit polyclonal antibody, at 1:500 dilution

Secondary antibody:  
Dylight 800-labeled antibody to rabbit IgG (H+L), at 1:5000 dilution

Developed using the odssey technique.  
Performed under reducing conditions.

Predicted band size: 60 kDa  
Observed band size: 81 kDa