



Catalog Number: 10973-R111

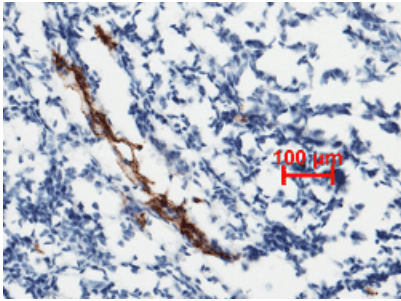
EliteRmab® is a registered trademark of Sino Biological Inc.

GENERAL INFORMATION	
Immunogen:	Recombinant Human vWF protein (Catalog#10973-H08C)
Preparation	This antibody was obtained from a rabbit immunized with purified, recombinant Human von Willebrand factor (rh vWF; Catalog#10973-H08C; Met 1-Lys 2813; NP_000543.2)
Ig Type:	Rabbit IgG
Clone ID:	111
Specificity:	Human vWF / von Willebrand factor
Formulation:	0.2 µm filtered solution in PBS
Storage:	This antibody can be stored at 2°C-8°C for one month without detectable loss of activity. Antibody products are stable for twelve months from date of receipt when stored at -20°C to -80°C. Preservative-Free. Sodium azide is recommended to avoid contamination (final concentration 0.05%-0.1%). It is toxic to cells and should be disposed of properly. Avoid repeated freeze-thaw cycles.
APPLICATIONS	
Applications:	ELISA,ELISA(Det),IHC-P
RECOMMENDED CONCENTRATION	
IHC-P	IHC-P: 1:500-1:2000
ELISA	ELISA: 1:5000-1:10000 This antibody can be used at 1:5000-1:10000 with the appropriate secondary reagents to detect Human vWF.
Sandwich ELISA (Detection Ab)	ELISA(Det): 1:1000-1:10000 This antibody will detect Human VWF / Von Willebrand Factor in ELISA pair set (Catalog: # SEKA10973). In a sandwich ELISA, it can be used as detection antibody when paired with (Catalog: # 10973-MM05).

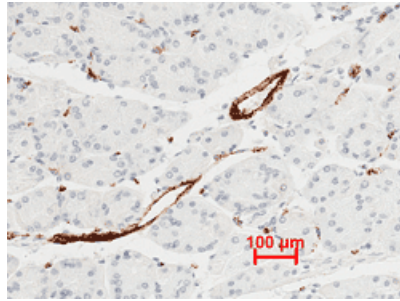
Please Note: Optimal concentrations/dilutions should be determined by the end user.

Catalog Number: 10973-R111

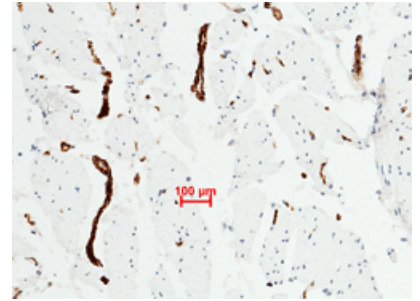
EliteRmab® is a registered trademark of Sino Biological Inc.



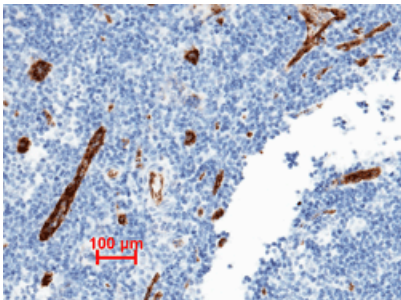
Immunohistochemical staining of formalin fixed, paraffin-embedded human tonsil showing blood vessel staining (1:1000).



Immunohistochemical staining of formalin fixed, paraffin-embedded human stomach showing blood vessel staining (1:1000).



Immunohistochemical staining of formalin fixed, paraffin-embedded human muscle showing blood vessel staining (1:1000).



Immunohistochemical staining of formalin fixed, paraffin-embedded human lymphonode showing blood vessel staining (1:1000).