

# IL-16 Antibody, Rabbit PAb, Antigen Affinity Purified



Sino Biological  
Biological Solution Specialist

Catalog Number: 10944-T24

## GENERAL INFORMATION

<b>Immunogen:</b>	Recombinant Human IL-16 Protein (Catalog#10944-H07E)
<b>Preparation</b>	Produced in rabbits immunized with purified, recombinant Human IL-16 (rh IL-16; Catalog#10944-H07E; AAC12732.1; Pro2-Ser130). IL-16 specific IgG was purified by Human IL-16 affinity chromatography.
<b>Ig Type:</b>	Rabbit IgG
<b>Specificity:</b>	Human IL-16
<b>Formulation:</b>	PBS, pH7.0 with 0.03% Proclin300
<b>Storage:</b>	This antibody can be stored at 2°C-8°C for one month without detectable loss of activity. Antibody products are stable for twelve months from date of receipt when stored at -20°C to -80°C. Avoid repeated freeze-thaw cycles.

## APPLICATIONS

<b>Applications:</b>	ELISA, IHC-P
----------------------	--------------

## RECOMMENDED CONCENTRATION

<b>IHC-P</b>	IHC-P: 1:200-1:1000
<b>ELISA</b>	ELISA: 1:5000-1:10000 This antibody can be used at 1:5000-1:10000 with the appropriate secondary reagents to detect Human IL-16.

**Please Note: Optimal concentrations/dilutions should be determined by the end user.**

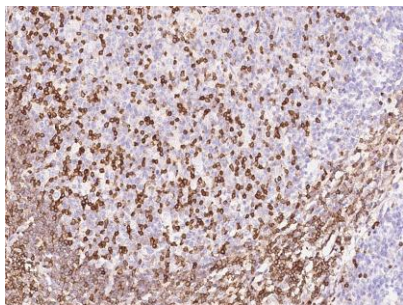
# IL-16 Antibody, Rabbit PAb, Antigen Affinity Purified



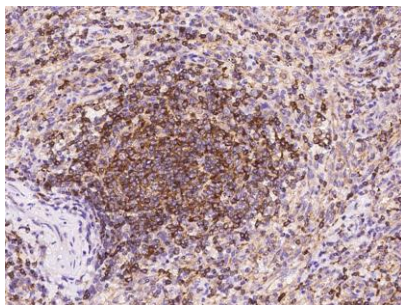
Sino Biological  
Biological Solution Specialist

Catalog Number: 10944-T24

---



Immunochemical staining of human IL16 in human tonsil with rabbit polyclonal antibody at 1:300 dilution, formalin-fixed paraffin embedded sections.



Immunochemical staining of human IL16 in human spleen with rabbit polyclonal antibody at 1:300 dilution, formalin-fixed paraffin embedded sections.