



Catalog Number: 10811-R257-P

EliteRmab® is a registered trademark of Sino Biological Inc.

GENERAL INFORMATION

Immunogen:	Recombinant Human CD21 Protein (Catalog#10811-H08H)
Reagents:	PE-conjugated Rabbit monoclonal antibody
Preparation	This antibody was obtained from a rabbit immunized with purified, recombinant Human CD21 (rh CD21; Catalog#10811-H08H; P20023-1; Met1-Arg971) and conjugated with PE under optimum conditions, the unreacted PE was removed.
Ig Type:	Rabbit IgG
Clone ID:	257
Specificity:	Human CD21
Concentration:	5 µl/Test, 0.1 mg/ml
Formulation:	Aqueous solution containing 0.5% BSA and 0.09% sodium azide
Storage:	This antibody is stable for 12 months from date of receipt when stored at 2°C-8°C. Protected from prolonged exposure to light. Do not freeze! Sodium azide is toxic to cells and should be disposed of properly. Flush with large volumes of water during disposal.

APPLICATIONS

Applications:	FCM
----------------------	-----

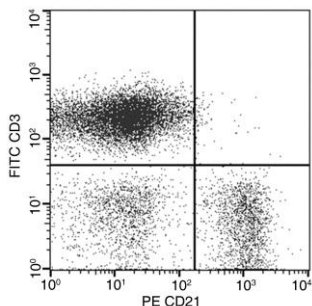
RECOMMENDED CONCENTRATION

Please Note: Optimal concentrations/dilutions should be determined by the end user.



Catalog Number: 10811-R257-P

EliteRmab® is a registered trademark of Sino Biological Inc.



Flow cytometric analysis of Human CD21 expression on human whole blood lymphocytes. Cells were stained with PE-conjugated anti-Human CD21 and FITC conjugated anti-Human CD3. The dot plots were derived from gated events with the forward and side light-scatter characteristics of viable lymphocytes.

Flow cytometry was performed on a BD FACSCalibur flow cytometry system. Please refer to www.sinobiological.com/Flow-Cytometry-FACS-Protocols-a-750.html for technical protocols.