

CLSTN1 Antibody, Rabbit PAb, Antigen Affinity Purified



Sino Biological
Biological Solution Specialist

Catalog Number: 107034-T08

GENERAL INFORMATION

Immunogen:	A synthetic peptide corresponding to the center region of the Human CLSTN1
Preparation	Produced in rabbits immunized with a synthetic peptide corresponding to the center region of the Human CLSTN1, and purified by antigen affinity chromatography.
Ig Type:	Rabbit IgG
Specificity:	Human Mouse, Rat (Species predicted to react based on 1% sequence homology)
Formulation:	0.2 µm filtered solution in PBS
Storage:	This antibody can be stored at 2°C-8°C for one month without detectable loss of activity. Antibody products are stable for twelve months from date of receipt when stored at -20°C to -80°C. Preservative-Free. Sodium azide is recommended to avoid contamination (final concentration 0.05%-0.1%). It is toxic to cells and should be disposed of properly. Avoid repeated freeze-thaw cycles.

APPLICATIONS

Applications: IHC-P

RECOMMENDED CONCENTRATION

IHC-P IHC-P: 1:500-1:3000

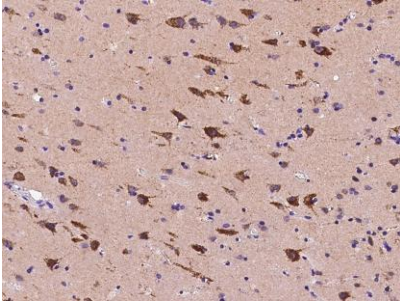
Please Note: Optimal concentrations/dilutions should be determined by the end user.

CLSTN1 Antibody, Rabbit PAb, Antigen Affinity Purified



Sino Biological
Biological Solution Specialist

Catalog Number: 107034-T08



Immunochemical staining of human CLSTN1 in human brain with rabbit polyclonal antibody at 1:2000 dilution, formalin-fixed paraffin embedded sections.