

RBFOX3 Antibody, Rabbit PAb, Antigen Affinity Purified



Sino Biological
Biological Solution Specialist

Catalog Number: 106130-T08

GENERAL INFORMATION

| | |
|---------------------|-----------------------------------------------------------------------------------------------------------------------------------------------------------------------------------------------------------------------------------------------------------------------------------------------------------------------------------------------------------------------------------------------------|
| Immunogen: | A synthetic peptide corresponding to the center region of the Mouse RBFOX3 |
| Preparation | Produced in rabbits immunized with a synthetic peptide corresponding to the center region of the Mouse RBFOX3, and purified by antigen affinity chromatography. |
| Ig Type: | Rabbit IgG |
| Specificity: | Mouse RBFOX3 |
| Formulation: | 0.2 µm filtered solution in PBS |
| Storage: | This antibody can be stored at 2°C-8°C for one month without detectable loss of activity. Antibody products are stable for twelve months from date of receipt when stored at -20°C to -80°C. Preservative-Free. Sodium azide is recommended to avoid contamination (final concentration 0.05%-0.1%). It is toxic to cells and should be disposed of properly. Avoid repeated freeze-thaw cycles. |

APPLICATIONS

| | |
|----------------------|-------|
| Applications: | IHC-P |
|----------------------|-------|

RECOMMENDED CONCENTRATION

| | |
|--------------|---------------------|
| IHC-P | IHC-P: 1:500-1:2000 |
|--------------|---------------------|

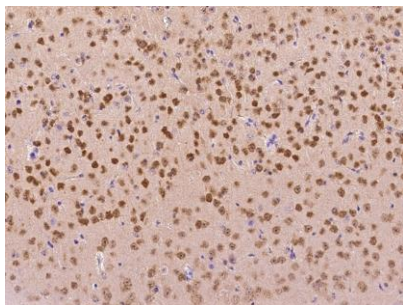
Please Note: Optimal concentrations/dilutions should be determined by the end user.

RBFOX3 Antibody, Rabbit PAb, Antigen Affinity Purified

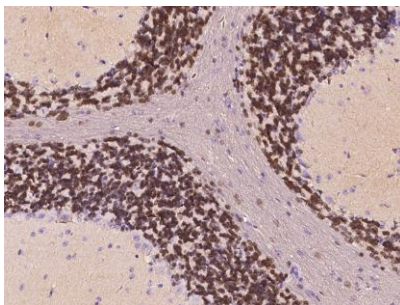


Sino Biological
Biological Solution Specialist

Catalog Number: 106130-T08



Immunohistochemical staining of mouse RBFOX3 in mouse brain with rabbit polyclonal antibody at 1:1000 dilution, formalin-fixed paraffin embedded sections.



Immunohistochemical staining of mouse RBFOX3 in mouse cerebellum with rabbit polyclonal antibody at 1:1000 dilution, formalin-fixed paraffin embedded sections.