

NSA2/TINP1 Antibody, Rabbit PAb, Antigen Affinity Purified



Sino Biological
Biological Solution Specialist

Catalog Number: 106081-T08

GENERAL INFORMATION

Immunogen:	A synthetic peptide corresponding to the center region of the Mouse NSA2/TINP1
Preparation	Produced in rabbits immunized with a synthetic peptide corresponding to the center region of the Mouse NSA2/TINP1, and purified by antigen affinity chromatography.
Ig Type:	Rabbit IgG
Specificity:	Human, Mouse
	Reacts with Human
Formulation:	PBS, pH7.0 with 0.03% Proclin300
Storage:	This antibody can be stored at 2°C-8°C for one month without detectable loss of activity. Antibody products are stable for twelve months from date of receipt when stored at -20°C to -80°C. Avoid repeated freeze-thaw cycles.

APPLICATIONS

Applications: IHC-P

RECOMMENDED CONCENTRATION

IHC-P IHC-P: 1:200-1:2000

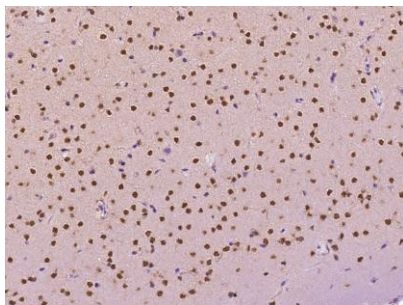
Please Note: Optimal concentrations/dilutions should be determined by the end user.

NSA2/TINP1 Antibody, Rabbit PAb, Antigen Affinity Purified

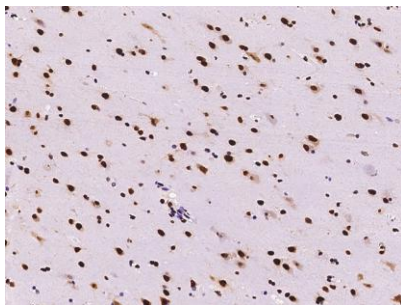


Sino Biological
Biological Solution Specialist

Catalog Number: 106081-T08



Immunochemical staining of mouse NSA2 in mouse brain with rabbit polyclonal antibody at 1:300 dilution, formalin-fixed paraffin embedded sections.



Immunochemical staining of mouse NSA2 in human brain with rabbit polyclonal antibody at 1:2000 dilution, formalin-fixed paraffin embedded sections.