

Human Bcl2A1/Bfl-1 protein (His tag)



Sino Biological
Biological Solution Specialist

Catalog Number: 10562-H07E

General Information

Gene Name Synonym:

ACC-1; ACC-2; ACC1; ACC2; BCL2L5; BFL1; GRS; HBPA1

Protein Construction:

A DNA sequence encoding the human BCL2A1 (NP_004040) (Met1-Ser152) was expressed with a polyhistidine tag at the N-terminus.

Source: Human

Expression Host: E. coli

QC Testing

Purity: > 85 % as determined by SDS-PAGE.

Endotoxin:

Please contact us for more information.

Stability:

Samples are stable for up to twelve months from date of receipt at -70 °C

Predicted N terminal: Met 1

Molecular Mass:

The recombinant human BCL2A1 consists of 170 amino acids and predicts a molecular mass of 19.7 kDa.

Formulation:

Lyophilized from sterile PBS pH 7.4.

Normally 5 % - 8 % trehalose, mannitol and 0.01% Tween80 are added as protectants before lyophilization. Specific concentrations are included in the hardcopy of COA. Please contact us for any concerns or special requirements.

Usage Guide

Storage:

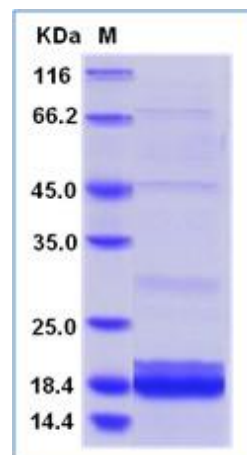
Store it under sterile conditions at -20°C to -80°C upon receiving. Recommend to aliquot the protein into smaller quantities for optimal storage.

Avoid repeated freeze-thaw cycles.

Reconstitution:

Detailed reconstitution instructions are sent along with the products.

SDS-PAGE:



Manufactured By Sino Biological Inc., FOR RESEARCH USE ONLY. NOT FOR USE IN HUMANS.

For US Customer: Fax: 267-657-0217 • Tel: 215-583-7898

Global Customer: Fax :+86-10-5862-8288 • Tel:+86-400-890-9989 • <http://www.sinobiological.com>