

Cathepsin B/CTSB Antibody, Rabbit PAb, Antigen Affinity Purified



Sino Biological
Biological Solution Specialist

Catalog Number: 10483-T56

| GENERAL INFORMATION | |
|---------------------------|---|
| Immunogen: | Recombinant Human Cathepsin B/CTSB Protein (Catalog#10483-H08H) |
| Preparation | Produced in rabbits immunized with purified, recombinant Human Cathepsin B/CTSB (rh Cathepsin B/CTSB; Catalog#10483-H08H; NP_001899.1; Arg18-Ile339). Cathepsin B/CTSB specific IgG was purified by Human Cathepsin B/CTSB affinity chromatography. |
| Ig Type: | Rabbit IgG |
| Specificity: | Human Cathepsin B/CTSB |
| Formulation: | 0.2 µm filtered solution in PBS |
| Storage: | This antibody can be stored at 2°C-8°C for one month without detectable loss of activity. Antibody products are stable for twelve months from date of receipt when stored at -20°C to -80°C. Preservative-Free. Sodium azide is recommended to avoid contamination (final concentration 0.05%-0.1%). It is toxic to cells and should be disposed of properly. Avoid repeated freeze-thaw cycles. |
| APPLICATIONS | |
| Applications: | WB,ELISA,IHC-P |
| RECOMMENDED CONCENTRATION | |
| IHC-P | IHC-P: 1:500-1:2000 |
| Western Blot | WB: 1:500-1:2000 |
| ELISA | ELISA: 1:5000-1:10000 This antibody can be used at 1:5000-1:10000 with the appropriate secondary reagents to detect Human Cathepsin B/CTSB. |

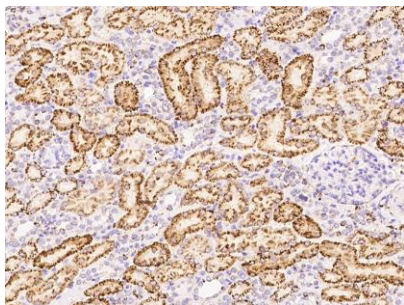
Please Note: Optimal concentrations/dilutions should be determined by the end user.

Cathepsin B/CTSB Antibody, Rabbit PAb, Antigen Affinity Purified

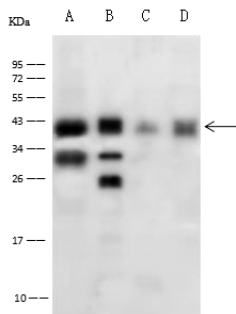


Sino Biological
Biological Solution Specialist

Catalog Number: 10483-T56



Immunochemical staining of human CTSB in human kidney with rabbit polyclonal antibody at 1:1000 dilution, formalin-fixed paraffin embedded sections.



Anti-CTSB rabbit polyclonal antibody at 1:500 dilution

Lane A: A549 Whole Cell Lysate
Lane B: HepG2 Whole Cell Lysate
Lane C: HEK293 Whole Cell Lysate
Lane D: A431 Whole Cell Lysate

Lysates/proteins at 30 µg per lane.

Secondary

Goat Anti-Rabbit IgG (H+L)/HRP at 1/10000 dilution.

Developed using the ECL technique.
Performed under reducing conditions.

Predicted band size:38 kDa
Observed band size:40 kDa
(We are unsure as to the identity of these extra bands.)