

CLTC Antibody, Rabbit PAb, Antigen Affinity Purified



Sino Biological
Biological Solution Specialist

Catalog Number: 104503-T40

GENERAL INFORMATION

Immunogen:	A synthetic peptide corresponding to the center region of the Human CLTC
Preparation	Produced in rabbits immunized with a synthetic peptide corresponding to the center region of the Human CLTC, and purified by antigen affinity chromatography.
Ig Type:	Rabbit IgG
Specificity:	Human, Mouse, Rat
	Reacts with Mouse, Rat
Formulation:	PBS, pH7.0 with 0.03% Proclin300
Storage:	This antibody can be stored at 2°C-8°C for one month without detectable loss of activity. Antibody products are stable for twelve months from date of receipt when stored at -20°C to -80°C. Avoid repeated freeze-thaw cycles.

APPLICATIONS

Applications:	WB,IHC-P
----------------------	----------

RECOMMENDED CONCENTRATION

IHC-P	IHC-P: 1:200-1:1000
Western Blot	WB: 1:500-1:2000

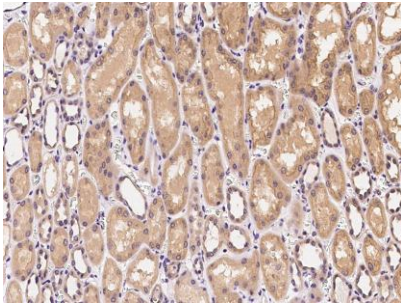
Please Note: Optimal concentrations/dilutions should be determined by the end user.

CLTC Antibody, Rabbit PAb, Antigen Affinity Purified

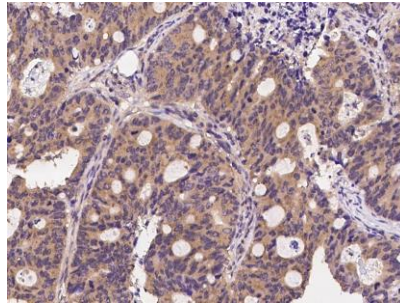


Sino Biological
Biological Solution Specialist

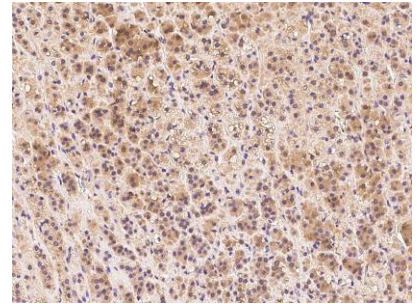
Catalog Number: 104503-T40



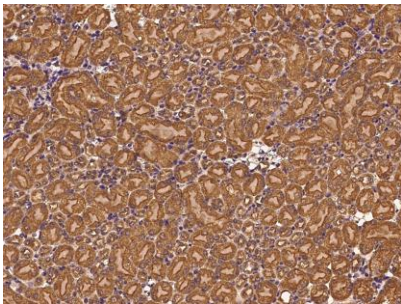
Immunochemical staining of human CLTC in human kidney with rabbit polyclonal antibody at 1:500 dilution, formalin-fixed paraffin embedded sections.



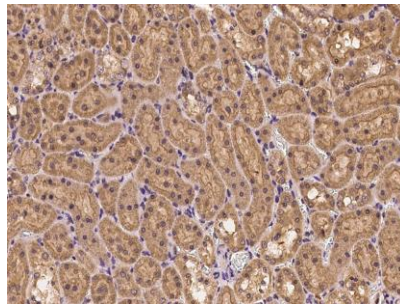
Immunochemical staining of human CLTC in human colon with rabbit polyclonal antibody at 1:500 dilution, formalin-fixed paraffin embedded sections.



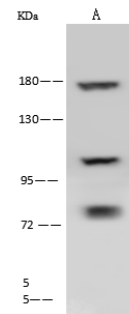
Immunochemical staining of human CLTC in human adrenal gland with rabbit polyclonal antibody at 1:500 dilution, formalin-fixed paraffin embedded sections.



Immunochemical staining of human CLTC in mouse kidney with rabbit polyclonal antibody at 1:500 dilution, formalin-fixed paraffin embedded sections.



Immunochemical staining of human CLTC in rat kidney with rabbit polyclonal antibody at 1:500 dilution, formalin-fixed paraffin embedded sections.



Anti-CLTC rabbit polyclonal antibody at 1:500 dilution
Lane A: HeLa Whole Cell Lysate

Lysates/proteins at 30 µg per lane.
Secondary
Goat Anti-Rabbit IgG (H+L)/HRP at 1/10000 dilution.

Developed using the ECL technique.
Performed under reducing conditions.

Predicted band size: 191 kDa