

TROP2 / TACSTD2 Antibody, Mouse MAb



Sino Biological
Biological Solution Specialist

Catalog Number: 10428-MM01

GENERAL INFORMATION

Immunogen:	Recombinant Human TROP2 protein (Catalog#10428-H08H)
Preparation	This antibody was produced from a hybridoma resulting from the fusion of a mouse myeloma with B cells obtained from a mouse immunized with purified, recombinant Human TROP2 extracellular domain (rh TROP2; Catalog#10428-H08H; NP_002344.2; Met 1-Thr 274). The IgG fraction of the cell culture supernatant was purified by Protein A affinity chromatography.
Ig Type:	Mouse IgG1
Clone ID:	01
Specificity:	Human TROP2 / TACSTD2 No cross-reactivity in ELISA with Human BCAM / CD239 Human VCAM1 / CD106 Human ICAM1 / CD54 Human CD146 / MCAM / MUC18 Human CD171 / NCAML1 / L1CAM Human Cadherin-1 / E-cadherin / CDH1 / CD324 Does not react with Mouse, Rat
Formulation:	0.2 µm filtered solution in PBS
Storage:	This antibody can be stored at 2°C-8°C for one month without detectable loss of activity. Antibody products are stable for twelve months from date of receipt when stored at -20°C to -80°C. Preservative-Free. Sodium azide is recommended to avoid contamination (final concentration 0.05%-0.1%). It is toxic to cells and should be disposed of properly. Avoid repeated freeze-thaw cycles.

APPLICATIONS

Applications:	ELISA,ELISA(Det),IHC-P,FCM
----------------------	----------------------------

RECOMMENDED CONCENTRATION

IHC-P	IHC-P: 1:100-1:500
Flow Cytometry	FCM: 1:25-1:100
ELISA	ELISA: 1:1000-1:2000 This antibody can be used at 1:1000-1:2000 with the appropriate secondary reagents to detect Human TROP2.
Sandwich ELISA (Detection Ab)	ELISA(Det): 1:1000-1:10000 This antibody will detect Human TROP-2 / TACSTD2 / TACD2 in ELISA pair set (Catalog: # SEK10428). In a sandwich ELISA, it can be used as detection antibody when paired with (Catalog: # 10428-MM02).

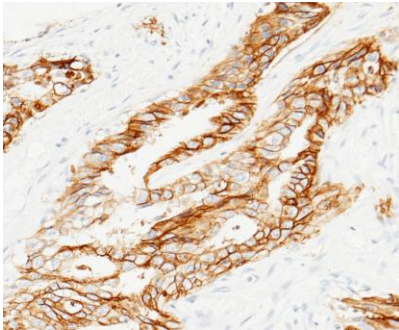
Please Note: Optimal concentrations/dilutions should be determined by the end user.

TROP2 / TACSTD2 Antibody, Mouse MAb

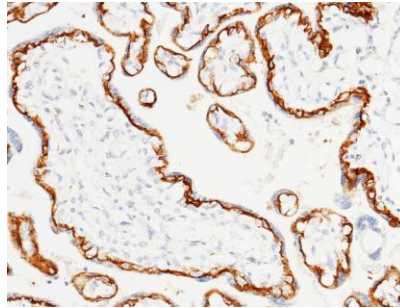


Sino Biological
Biological Solution Specialist

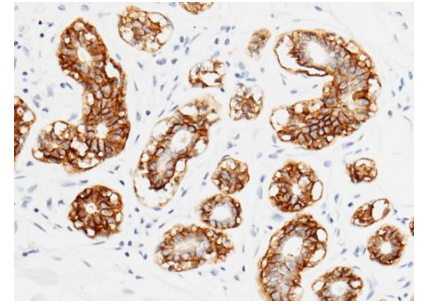
Catalog Number: 10428-MM01



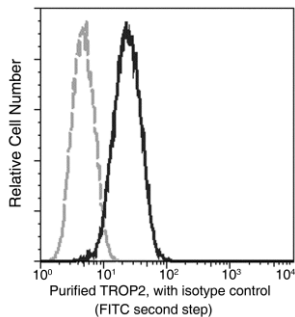
Immunohistochemical staining of human TROP2 in human rectal cancer with mouse monoclonal antibody (1:200, formalin-fixed paraffin embedded sections).



Immunohistochemical staining of human TROP2 in human placenta with mouse monoclonal antibody (1:60, formalin-fixed paraffin embedded sections). Positive staining was localized to membrane of cytotrophoblast.



Immunohistochemical staining of human TROP2 in human mammary gland with mouse monoclonal antibody (1:200, formalin-fixed paraffin embedded sections). Positive staining was localized to membrane of alveolus epithelium.



Flow cytometric analysis of human TROP2 expression on MCF-7 cells. Cells were stained with purified anti-Human TROP2, then a FITC-conjugated second step antibody. The histogram were derived from gated events with the forward and side light-scatter characteristics of intact cells.

Flow cytometry was performed on a BD FACSCalibur flow cytometry system. Please refer to www.sinobiological.com/Flow-Cytometry-FACS-Protocols-a-750.html for technical protocols.