

**CD16/Fc gamma RIII Antibody,
Rabbit MAb**

Catalog Number: 10389-R221

EliteRmab® is a registered trademark of Sino Biological Inc.

GENERAL INFORMATION	
Immunogen:	Recombinant Human CD16a/Fc gamma RIIIa Protein (Catalog#10389-H08H)
Preparation	This antibody was obtained from a rabbit immunized with purified, recombinant Human CD16a/Fc gamma RIIIa (rh CD16a/Fc gamma RIIIa; Catalog#10389-H08H; P08637-1; Met1-Gln208).
Ig Type:	Rabbit IgG
Clone ID:	221
Specificity:	Human CD16 (CD16a & CD16b)
Formulation:	0.2 µm filtered solution in PBS
Storage:	This antibody can be stored at 2°C-8°C for one month without detectable loss of activity. Antibody products are stable for twelve months from date of receipt when stored at -20°C to -80°C. Preservative-Free. Sodium azide is recommended to avoid contamination (final concentration 0.05%-0.1%). It is toxic to cells and should be disposed of properly. Avoid repeated freeze-thaw cycles.
APPLICATIONS	
Applications:	FCM
RECOMMENDED CONCENTRATION	
Flow Cytometry	FCM: 1:25-1:100

Please Note: Optimal concentrations/dilutions should be determined by the end user.

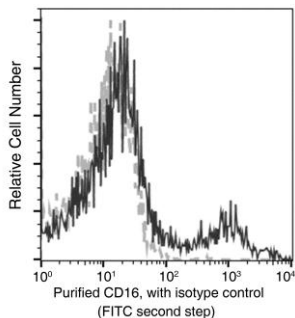
CD16/Fc gamma RIII Antibody, Rabbit MAb

Catalog Number: 10389-R221



Sino Biological
Biological Solution Specialist

EliteRmab® is a registered trademark of Sino Biological Inc.



Flow cytometric analysis of Human CD16 expression on human whole blood lymphocytes. Cells were stained with purified anti-Human CD16, then a FITC-conjugated second step antibody. The fluorescence histograms were derived from gated events with the forward and side light-scatter characteristics of viable lymphocytes.

Flow cytometry was performed on a BD FACSCalibur flow cytometry system. Please refer to www.sinobiological.com/Flow-Cytometry-FACS-Protocols-a-750.html for technical protocols.