

# PD1/PDCD1/CD279 Antibody (FITC), Mouse MAb



Sino Biological  
Biological Solution Specialist

Catalog Number: 10377-MA04-F

## GENERAL INFORMATION

<b>Immunogen:</b>	Recombinant Human PD1/PDCD1/CD279 Protein (Catalog#10377-H08H)
<b>Reagents:</b>	FITC-conjugated Mouse monoclonal antibody
<b>Preparation</b>	This antibody was produced from a hybridoma resulting from the fusion of a mouse myeloma with B cells obtained from a mouse immunized with purified, recombinant Human PD1/PDCD1/CD279 (rh PD1/PDCD1/CD279; Catalog#10377-H08H; NP_005009.2; Met1-Gln167) and conjugated with FITC under optimum conditions, the unreacted FITC was removed.
<b>Ig Type:</b>	Mouse IgG1
<b>Clone ID:</b>	A04
<b>Specificity:</b>	Human PD1/PDCD1/CD279
<b>Concentration:</b>	10 µl/Test, 0.1 mg/ml
<b>Formulation:</b>	Aqueous solution containing 0.5% BSA and 0.09% sodium azide
<b>Storage:</b>	This antibody is stable for 12 months from date of receipt when stored at 2°C-8°C. Protected from prolonged exposure to light. Do not freeze! Sodium azide is toxic to cells and should be disposed of properly. Flush with large volumes of water during disposal.

## APPLICATIONS

<b>Applications:</b>	FCM
----------------------	-----

## RECOMMENDED CONCENTRATION

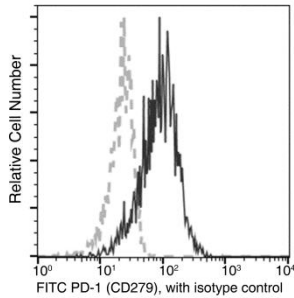
*Please Note: Optimal concentrations/dilutions should be determined by the end user.*

# PD1/PDCD1/CD279 Antibody (FITC), Mouse MAb



Sino Biological  
Biological Solution Specialist

Catalog Number: 10377-MA04-F



Flow cytometric analysis of Human PD-1 (CD279) expression on PHA-activated human whole blood Lymphocytes. Cells were stained with FITC-conjugated anti-Human PD-1 (CD279). The fluorescence histograms were derived from gated events with the forward and side light-scatter characteristics of viable Lymphocytes.

Flow cytometry was performed on a BD FACSCalibur flow cytometry system. Please refer to [www.sinobiological.com/Flow-Cytometry-FACS-Protocols-a-750.html](http://www.sinobiological.com/Flow-Cytometry-FACS-Protocols-a-750.html) for technical protocols.