

Prolactin Receptor/PRLR Antibody, Rabbit PAb, Antigen Affinity Purified



Sino Biological
Biological Solution Specialist

Catalog Number: 10278-T08

GENERAL INFORMATION

Immunogen:	Recombinant Human Prolactin Receptor/PRLR Protein (Catalog#10278-H08H)
Preparation	Produced in rabbits immunized with purified, recombinant Human Prolactin Receptor/PRLR (rh Prolactin Receptor/PRLR; Catalog#10278-H08H; NP_000940.1; Met1-Asp234). Prolactin Receptor/PRLR specific IgG was purified by Human Prolactin Receptor/PRLR affinity chromatography.
Ig Type:	Rabbit IgG
Specificity:	Human Prolactin Receptor/PRLR
Formulation:	0.2 µm filtered solution in PBS
Storage:	This antibody can be stored at 2°C-8°C for one month without detectable loss of activity. Antibody products are stable for twelve months from date of receipt when stored at -20°C to -80°C. Preservative-Free. Sodium azide is recommended to avoid contamination (final concentration 0.05%-0.1%). It is toxic to cells and should be disposed of properly. Avoid repeated freeze-thaw cycles.

APPLICATIONS

Applications:	IHC-P
----------------------	-------

RECOMMENDED CONCENTRATION

IHC-P	IHC-P: 1:500-1:2000
--------------	---------------------

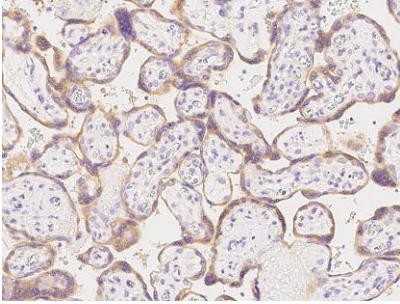
Please Note: Optimal concentrations/dilutions should be determined by the end user.

Prolactin Receptor/PRLR Antibody, Rabbit PAb, Antigen Affinity Purified

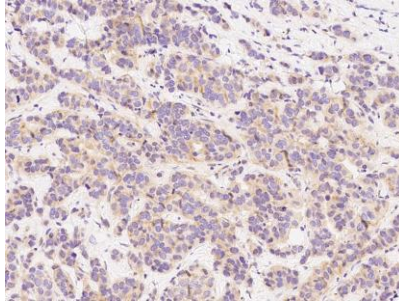


Sino Biological
Biological Solution Specialist

Catalog Number: 10278-T08



Immunochemical staining of human PRLR in human placenta with rabbit polyclonal antibody at 1:1000 dilution, formalin-fixed paraffin embedded sections.



Immunochemical staining of human PRLR in human breast carcinoma with rabbit polyclonal antibody at 1:1000 dilution, formalin-fixed paraffin embedded sections.