

# Cytochrome c Antibody, Rabbit PAb, Antigen Affinity Purified



Sino Biological  
Biological Solution Specialist

Catalog Number: 102139-T42

## GENERAL INFORMATION

<b>Immunogen:</b>	A synthetic peptide corresponding to the C-terminus of the Human Cytochrome c
<b>Preparation</b>	Produced in rabbits immunized with a synthetic peptide corresponding to the C-terminus of the Human Cytochrome c, and purified by antigen affinity chromatography.
<b>Ig Type:</b>	Rabbit IgG
<b>Specificity:</b>	Human Mouse, Rat, Rhesus (Species predicted to react based on 100% sequence homology)
<b>Formulation:</b>	0.2 µm filtered solution in PBS
<b>Storage:</b>	This antibody can be stored at 2°C-8°C for one month without detectable loss of activity. Antibody products are stable for twelve months from date of receipt when stored at -20°C to -80°C. Preservative-Free. Avoid repeated freeze-thaw cycles.
<b>Alternative Names:</b>	CYC,HCS,THC4

## APPLICATIONS

<b>Applications:</b>	WB,IHC-P,ICC/IF
----------------------	-----------------

## RECOMMENDED CONCENTRATION

<b>IHC-P</b>	IHC-P: 1:500-1:2000
<b>ICC/IF</b>	ICC/IF: 1:200-1:1000
<b>Western Blot</b>	WB: 1:500-1:2000

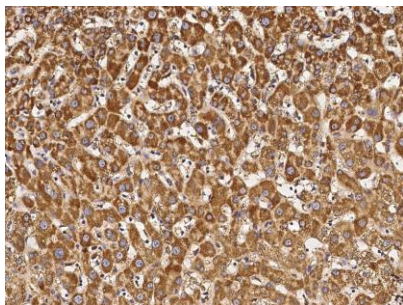
*Please Note: Optimal concentrations/dilutions should be determined by the end user.*

# Cytochrome c Antibody, Rabbit PAb, Antigen Affinity Purified

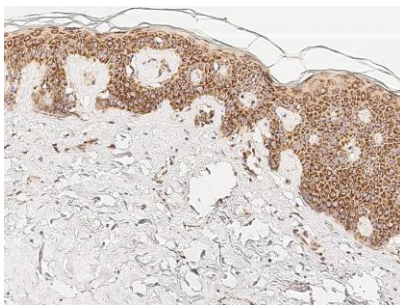


Sino Biological  
Biological Solution Specialist

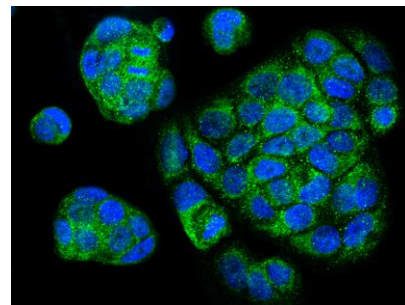
Catalog Number: 102139-T42



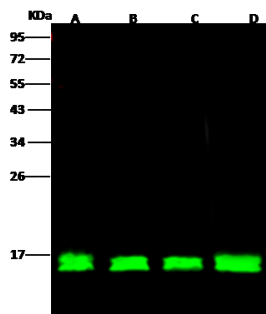
Immunohistochemical staining of human CYCS in human liver with rabbit polyclonal antibody (1:1000, formalin-fixed paraffin embedded sections).



Immunohistochemical staining of human CYCS in human skin with rabbit polyclonal antibody (1:1000, formalin-fixed paraffin embedded sections).



Immunofluorescence staining of CYCS in MCF7 cells. Cells were fixed with 4% PFA, permeabilized with 0.3% Triton X-100 in PBS, blocked with 10% serum, and incubated with rabbit anti-human CYCS polyclonal antibody (dilution ratio 1:300) at 4°C overnight. Then cells were stained with the Alexa Fluor®488-conjugated Goat Anti-rabbit IgG secondary antibody (green) and counterstained with DAPI (blue). Positive staining was localized to cytoplasm.



Anti-CYCS rabbit polyclonal antibody at 1:500 dilution

Lane A: HeLa Whole Cell Lysate  
Lane B: Jurkat Whole Cell Lysate  
Lane C: Molt4 Whole Cell Lysate  
Lane D: SHSY5Y Whole Cell Lysate

Lysates/proteins at 30 µg per lane.

Secondary  
Goat Anti- Rabbit IgG H&L (Dylight 800) at  
1/10000 dilution.

Developed using the Odyssey technique.  
Performed under reducing conditions.

Predicted band size:12 kDa  
Observed band size:16 kDa