

TUBG1 Antibody, Rabbit PAb, Antigen Affinity Purified



Sino Biological
Biological Solution Specialist

Catalog Number: 102072-T32

GENERAL INFORMATION

Immunogen:	A synthetic peptide corresponding to the C-terminus of the Human TUBG1
Preparation	Produced in rabbits immunized with a synthetic peptide corresponding to the C-terminus of the Human TUBG1, and purified by antigen affinity chromatography.
Ig Type:	Rabbit IgG
Specificity:	Human Mouse, Rat (Species predicted to react based on 100% sequence homology)
Formulation:	0.2 µm filtered solution in PBS
Storage:	This antibody can be stored at 2°C-8°C for one month without detectable loss of activity. Antibody products are stable for twelve months from date of receipt when stored at -20°C to -80°C. Preservative-Free. Sodium azide is recommended to avoid contamination (final concentration 0.05%-0.1%). It is toxic to cells and should be disposed of properly. Avoid repeated freeze-thaw cycles.

APPLICATIONS

Applications:	WB
----------------------	----

RECOMMENDED CONCENTRATION

Western Blot	WB: 1:500-1:2000
---------------------	------------------

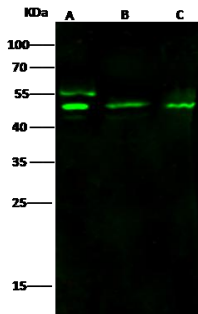
Please Note: Optimal concentrations/dilutions should be determined by the end user.

TUBG1 Antibody, Rabbit PAb, Antigen Affinity Purified



Sino Biological
Biological Solution Specialist

Catalog Number: 102072-T32



Anti-TUBG1 rabbit polyclonal antibody at
1:500 dilution
Lane A: Jurkat Whole Cell Lysate
Lane B: A431 Whole Cell Lysate
Lane C: K562 Whole Cell Lysate

Lysates/proteins at 30 μ g per lane.
Secondary
Goat Anti- Rabbit IgG H&L (Dylight 800) at
1/10000 dilution.

Developed using the Odyssey technique.
Performed under reducing conditions.

Predicted band size:51 kDa
Observed band size:51 kDa
(We are unsure as to the identity of these
extra bands.)