

# CALB2 Antibody, Rabbit PAb, Antigen Affinity Purified



Sino Biological  
Biological Solution Specialist

Catalog Number: 102071-T08

## GENERAL INFORMATION

<b>Immunogen:</b>	A synthetic peptide corresponding to the C-terminus of the Human CALB2
<b>Preparation</b>	Produced in rabbits immunized with a synthetic peptide corresponding to the C-terminus of the Human CALB2, and purified by antigen affinity chromatography.
<b>Ig Type:</b>	Rabbit IgG
<b>Specificity:</b>	Rat
<b>Formulation:</b>	PBS, pH7.0 with 0.03% Proclin300
<b>Storage:</b>	This antibody can be stored at 2°C-8°C for one month without detectable loss of activity. Antibody products are stable for twelve months from date of receipt when stored at -20°C to -80°C. Avoid repeated freeze-thaw cycles.

## APPLICATIONS

<b>Applications:</b>	IHC-P
----------------------	-------

## RECOMMENDED CONCENTRATION

<b>IHC-P</b>	IHC-P: 1:200-1:1000
--------------	---------------------

***Please Note: Optimal concentrations/dilutions should be determined by the end user.***

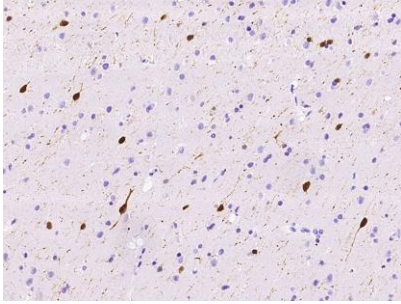
# CALB2 Antibody, Rabbit PAb, Antigen Affinity Purified



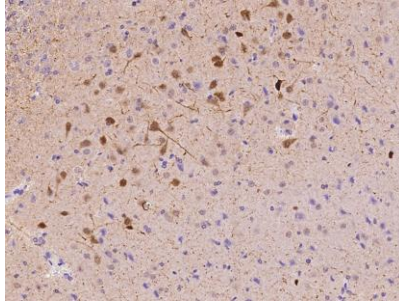
Sino Biological  
Biological Solution Specialist

Catalog Number: 102071-T08

---



Immunochemical staining of human CALB2 in human brain with rabbit polyclonal antibody at 1:300 dilution, formalin-fixed paraffin embedded sections.



Immunochemical staining of human CALB2 in rat brain with rabbit polyclonal antibody at 1:300 dilution, formalin-fixed paraffin embedded sections.