

# DP2 / TFDP2 Antibody, Rabbit PAb, Antigen Affinity Purified



Sino Biological  
Biological Solution Specialist

Catalog Number: 101770-T40

## GENERAL INFORMATION

<b>Immunogen:</b>	A synthetic peptide corresponding to the C-terminus of the Human DP2 / TFDP2
<b>Preparation</b>	Produced in rabbits immunized with a synthetic peptide corresponding to the C-terminus of the Human DP2 / TFDP2 , and purified by antigen affinity chromatography.
<b>Ig Type:</b>	Rabbit IgG
<b>Specificity:</b>	Human DP2 / TFDP2
<b>Formulation:</b>	0.2 µm filtered solution in PBS
<b>Storage:</b>	This antibody can be stored at 2°C-8°C for one month without detectable loss of activity. Antibody products are stable for twelve months from date of receipt when stored at -20°C to -80°C. Preservative-Free. Sodium azide is recommended to avoid contamination (final concentration 0.05%-0.1%). It is toxic to cells and should be disposed of properly. Avoid repeated freeze-thaw cycles.

## APPLICATIONS

**Applications:** WB,IHC-P

## RECOMMENDED CONCENTRATION

**IHC-P** IHC-P: 1:2500-1:10000

**Western Blot** WB: 1:500-1:1000

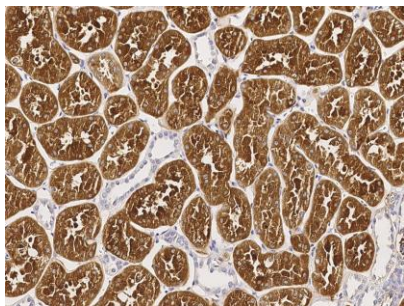
*Please Note: Optimal concentrations/dilutions should be determined by the end user.*

# DP2 / TFDP2 Antibody, Rabbit PAb, Antigen Affinity Purified

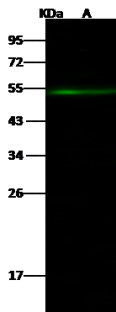


Sino Biological  
Biological Solution Specialist

Catalog Number: 101770-T40



Immunochemical staining of human TFDP2 in human kidney with rabbit polyclonal antibody (1:5000, formalin-fixed paraffin embedded sections).



Anti-TFDP2 rabbit polyclonal antibody at 1:500 dilution

Lane A: RAW264.7 Whole Cell Lysate

Lysates/proteins at 30 µg per lane.

Secondary

Goat Anti- Rabbit IgG H&L (Dylight 800) at 1/10000 dilution.

Developed using the Odyssey technique.

Performed under reducing conditions.

Predicted band size:49 kDa

Observed band size:53 kDa