

# PRPF19 Antibody, Rabbit PAb, Antigen Affinity Purified



Sino Biological  
Biological Solution Specialist

Catalog Number: 101726-T10

## GENERAL INFORMATION

<b>Immunogen:</b>	A synthetic peptide corresponding to the C-terminus of the Human PRPF19
<b>Preparation</b>	Produced in rabbits immunized with a synthetic peptide corresponding to the C-terminus of the Human PRPF19, and purified by antigen affinity chromatography.
<b>Ig Type:</b>	Rabbit IgG
<b>Specificity:</b>	Human, Mouse, Rat
	Reacts with Mouse, Rat
<b>Formulation:</b>	0.2 µm filtered solution in PBS
<b>Storage:</b>	This antibody can be stored at 2°C-8°C for one month without detectable loss of activity. Antibody products are stable for twelve months from date of receipt when stored at -20°C to -80°C. Preservative-Free. Avoid repeated freeze-thaw cycles.
<b>Alternative Names:</b>	hPSO4,NMP200,PRP19,PSO4,SNEV,UBOX4

## APPLICATIONS

**Applications:** IHC-P, ICC/IF

## RECOMMENDED CONCENTRATION

<b>IHC-P</b>	IHC-P: 1:2000-1:10000
<b>ICC/IF</b>	ICC/IF: 1:300-1:10000

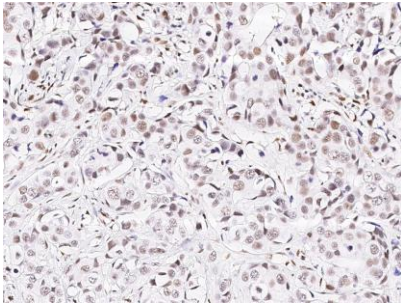
**Please Note: Optimal concentrations/dilutions should be determined by the end user.**

# PRPF19 Antibody, Rabbit PAb, Antigen Affinity Purified

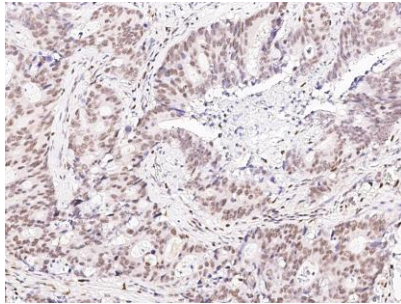


Sino Biological  
Biological Solution Specialist

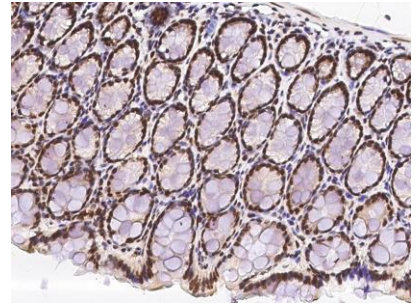
Catalog Number: 101726-T10



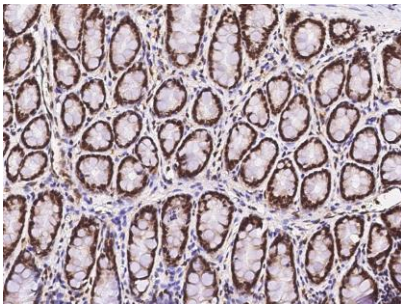
Immunochemical staining PRPF19 in human breast carcinoma with rabbit polyclonal antibody (1:5000, formalin-fixed paraffin embedded sections).



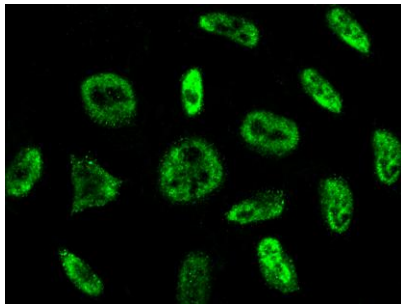
Immunochemical staining PRPF19 in human colon carcinoma with rabbit polyclonal antibody (1:5000, formalin-fixed paraffin embedded sections).



Immunochemical staining PRPF19 in mouse colon with rabbit polyclonal antibody (1:2000, formalin-fixed paraffin embedded sections).



Immunochemical staining PRPF19 in rat rectum with rabbit polyclonal antibody (1:2000, formalin-fixed paraffin embedded sections).



Immunofluorescence staining of PRPF19 in HeLa cells. Cells were fixed with 4% PFA, permeabilized with 0.3% Triton X-100 in PBS, blocked with 10% serum, and incubated with rabbit anti-Human PRPF19 polyclonal antibody (dilution ratio 1:1000) at 4 °C overnight. Then cells were stained with the Alexa Fluor 488-conjugated Goat Anti-rabbit IgG secondary antibody (green). Positive staining was localized to nucleus.