

Cyclophilin B / PPIB Antibody, Rabbit PAb, Antigen Affinity Purified



Sino Biological
Biological Solution Specialist

Catalog Number: 101242-T36

GENERAL INFORMATION

Immunogen:	A synthetic peptide corresponding to the C-terminus of the Human Cyclophilin B / PPIB
Preparation	Produced in rabbits immunized with a synthetic peptide corresponding to the C-terminus of the Human Cyclophilin B / PPIB, and purified by antigen affinity chromatography.
Ig Type:	Rabbit IgG
Specificity:	Human Cyclophilin B / PPIB
Formulation:	0.2 µm filtered solution in PBS
Storage:	This antibody can be stored at 2°C-8°C for one month without detectable loss of activity. Antibody products are stable for twelve months from date of receipt when stored at -20°C to -80°C. Preservative-Free. Sodium azide is recommended to avoid contamination (final concentration 0.05%-0.1%). It is toxic to cells and should be disposed of properly. Avoid repeated freeze-thaw cycles.

APPLICATIONS

Applications:	WB,IP
----------------------	-------

RECOMMENDED CONCENTRATION

Western Blot	WB: 1:500-1:2000
Immunoprecipitation	IP: 0.5-2 µL/mg of lysate

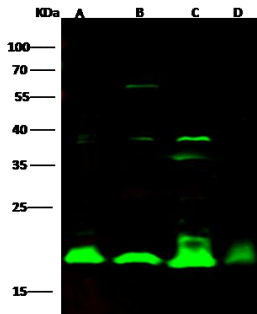
Please Note: Optimal concentrations/dilutions should be determined by the end user.

Cyclophilin B / PPIB Antibody, Rabbit PAb, Antigen Affinity Purified



Sino Biological
Biological Solution Specialist

Catalog Number: 101242-T36



Anti-PPIB rabbit polyclonal antibody at 1:500 dilution

Lane A: Hela whole cell lysate
Lane B: A431 whole cell lysate
Lane C: HepG2 whole cell lysate
Lane D: 293 whole cell lysate

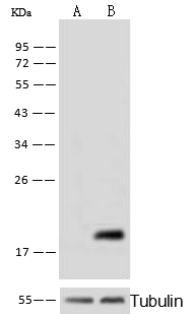
Lysates/proteins at 30 µg per lane.

Secondary
Goat Anti-Rabbit IgG H&L (Dylight800) at 1/10000 dilution.

Developed using the Odyssey technique.
Performed under reducing conditions.

Predicted band size: 23 kDa
Observed band size: 19 kDa
(We are unsure as to the identity of these extra bands.)

(Validation Experiment)



Anti-PPIB rabbit polyclonal antibody at 1:500 dilution

Lane A: PPIB knockout HeLa Whole Cell Lysate
Lane B: HeLa Whole Cell Lysate

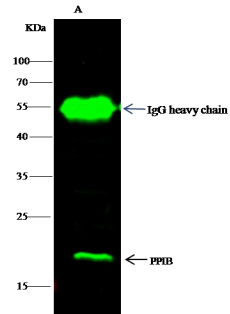
Lysates/proteins at 20 µg per lane.

Secondary
Goat Anti-Rabbit IgG (H+L)/HRP at 1/10000 dilution.

Developed using the ECL technique.
Performed under reducing conditions.

Predicted band size: 23 kDa
Observed band size: 19 kDa
(We are unsure as to the identity of these extra bands.)

(Validation Experiment)



PPIB was immunoprecipitated using:
Lane A: 0.5 mg HeLa Whole Cell Lysate

2 µL anti-PPIB rabbit polyclonal antibody and 60 µg of Immunomagnetic beads Protein G.

Primary antibody:

Anti-PPIB rabbit polyclonal antibody, at 1:100 dilution

Secondary antibody:
Dylight 800-labeled antibody to rabbit IgG (H+L), at 1:5000 dilution

Developed using the odyssey technique.
Performed under reducing conditions.

Predicted band size: 19 kDa
Observed band size: 19 kDa

(Validation Experiment)