

IL1RL1 Antibody, Rabbit PAb



Sino Biological
Biological Solution Specialist

Catalog Number: 10105-RP01

GENERAL INFORMATION	
Immunogen:	10105-H08H
Preparation	Produced in rabbits immunized with purified, recombinant Human IL1RL1 / ST2 (rh IL1RL1 / ST2; Catalog#10105-H08H; Met1-Phe328; NP_003847.2). Total IgG was purified by Protein A affinity chromatography.
Ig Type:	Rabbit IgG
Specificity:	Human IL1RL1 / ST2
Formulation:	0.2 µm filtered solution in PBS
Storage:	This antibody can be stored at 2°C-8°C for one month without detectable loss of activity. Antibody products are stable for twelve months from date of receipt when stored at -20°C to -80°C. Avoid repeated freeze-thaw cycles.
Alternative Names:	DER4
APPLICATIONS	
Applications:	WB,ELISA
RECOMMENDED CONCENTRATION	
Western Blot	WB: 1:500-1:2000
ELISA	ELISA: 1:1000-1:2000

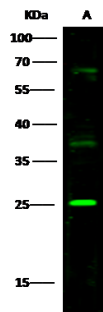
Please Note: Optimal concentrations/dilutions should be determined by the end user.

IL1RL1 Antibody, Rabbit PAb



Sino Biological
Biological Solution Specialist

Catalog Number: 10105-RP01



Anti-IL1RL1 rabbit polyclonal antibody at 1:500 dilution

Lane A: Daudi Whole Cell Lysate

Lysates/proteins at 30 µg per lane.

Secondary

Goat Anti-Rabbit IgG H&L (Dylight800) at 1/10000 dilution.

Developed using the Odyssey technique.

Performed under reducing conditions.

Predicted band size:29 kDa

Observed band size:25 kDa

For Research Use Only. Not for use in diagnostic or therapeutic procedures.

Tel: +86-400-890-9989 (Global), +1-215-583-7898 (USA), +49(0)6196 9678656 (Europe)

Website: <http://www.sinobiological.com>