

# Human IL1RL1 / ST2 Protein (His Tag)

Catalog Number: 10105-H08H



Sino Biological  
Biological Solution Specialist

## General Information

### Gene Name Synonym:

DER4; FIT-1; IL1RL1; IL33R; IL?1?R4; ST2; ST2L; ST2V; T1

### Protein Construction:

A DNA sequence encoding the human IL1RL1 isoform 2 (NP\_003847.2) (Met 1-Phe 328) was expressed, fused with a polyhistidine tag at the C-terminus.

**Source:** Human

**Expression Host:** HEK293 Cells

## QC Testing

**Purity:** > 95 % as determined by SDS-PAGE

### Bio Activity:

**1. Measured by its binding ability in a functional ELISA. 2. Immobilized recombinant human IL33 (Cat: 10368-HNAE) at 10 µg/mL (100 µl/well) can bind biotinylated human IL1RL1 (Cat: 10105-H08H) with a linear range of 0.16-8 µg/ml.**

### Endotoxin:

< 1.0 EU per µg of the protein as determined by the LAL method

### Stability:

Samples are stable for up to twelve months from date of receipt at -70 °C

**Predicted N terminal:** Lys 19

### Molecular Mass:

The recombinant human IL1RL1 consists of 321 amino acids and has a calculated molecular mass of 36.5 kDa. As a result of glycosylation, the apparent molecular mass of rhIL1RL1 is approximately 55-60 kDa in SDS-PAGE under reducing conditions.

### Formulation:

Lyophilized from sterile PBS, pH 7.4

Normally 5 % - 8 % trehalose, mannitol and 0.01% Tween80 are added as protectants before lyophilization. Specific concentrations are included in the hardcopy of COA. Please contact us for any concerns or special requirements.

## Usage Guide

### Storage:

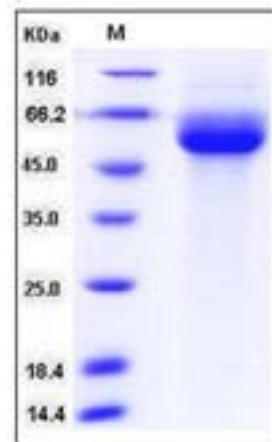
Store it under sterile conditions at -20°C to -80°C upon receiving. Recommend to aliquot the protein into smaller quantities for optimal storage.

**Avoid repeated freeze-thaw cycles.**

### Reconstitution:

Detailed reconstitution instructions are sent along with the products.

## SDS-PAGE:



## Protein Description

IL-1 receptor-like 1 (IL1RL1) is a membrane receptor involved in TH2 inflammatory responses and eosinophilia. It has previously been described that levels of the interleukin-1 like 1 (IL1RL1) protein can be used to diagnose cardiovascular disease and determine the prognosis for a patient with cardiovascular disease. The ligand for IL1RL1 has been described, and named IL-33. Mutants in IL1RL1 have been associated with blood eosinophil counts in a genome-wide association study and with asthma in family-based and case-control studies. As an important mediator involved in many immune and inflammatory responses, this cytokine has been implicated as a regulator of both the development and effector phases of type 2 helper T cell responses, and as a negative feedback modulator of macrophage pro-inflammatory function. IL33 is a specific ligand of ST2L and induces production of Th2 cytokines.

**Manufactured By Sino Biological Inc., FOR RESEARCH USE ONLY. NOT FOR USE IN HUMANS.**

**For US Customer:** Fax: 267-657-0217 ● Tel: 215-583-7898

**Global Customer:** Fax :+86-10-5862-8288 ● Tel:+86-400-890-9989 ● <http://www.sinobiological.com>