

TLK1 Antibody, Rabbit PAb, Antigen Affinity Purified



Sino Biological
Biological Solution Specialist

Catalog Number: 101007-T38

GENERAL INFORMATION

Immunogen:	A synthetic peptide corresponding to the C-terminus of the Human TLK1
Preparation	Produced in rabbits immunized with a synthetic peptide corresponding to the C-terminus of the Human TLK1, and purified by antigen affinity chromatography.
Ig Type:	Rabbit IgG
Specificity:	Human TLK1
Formulation:	0.2 µm filtered solution in PBS
Storage:	This antibody can be stored at 2°C-8°C for one month without detectable loss of activity. Antibody products are stable for twelve months from date of receipt when stored at -20°C to -80°C. Preservative-Free. Avoid repeated freeze-thaw cycles.
Alternative Names:	KIAA0137,PKU-beta

APPLICATIONS

Applications:	WB,ICC/IF,IP
----------------------	--------------

RECOMMENDED CONCENTRATION

ICC/IF	ICC/IF: 1:300-1:10000
Western Blot	WB: 1:500-1:2000
Immunoprecipitation	IP: 1-4 µL/mg of lysate

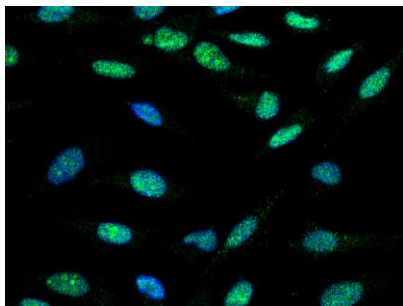
Please Note: Optimal concentrations/dilutions should be determined by the end user.

TLK1 Antibody, Rabbit PAb, Antigen Affinity Purified

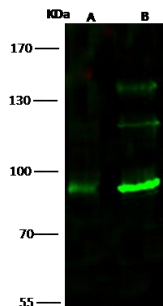


Sino Biological
Biological Solution Specialist

Catalog Number: 101007-T38



Immunofluorescence staining of TLK1 in HeLa cells. Cells were fixed with 4% PFA, blocked with 10% serum, and incubated with rabbit anti-human TLK1 polyclonal antibody (1:1000) at 4°C overnight. Then cells were stained with the Alexa Fluor®488-conjugated Goat Anti-rabbit IgG secondary antibody (green) and counterstained with DAPI (blue). Positive staining was localized to nucleus.



Anti-TLK1 rabbit polyclonal antibody at 1:500 dilution

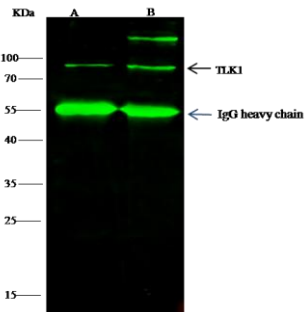
Lane A: 293T Whole Cell Lysate
Lane B: K562 Whole Cell Lysate

Lysates/proteins at 30 µg per lane.

Secondary
Goat Anti- Rabbit IgG H&L (Dylight 800) at 1/10000 dilution.

Developed using the Odyssey technique.
Performed under reducing conditions.

Predicted band size: 87 kDa
Observed band size: 87 kDa (We are unsure as to the identity of these extra bands.)



TLK1 was immunoprecipitated using:
Lane A: 0.5 mg 293T Whole Cell Lysate
Lane B: 0.5 mg K562 Whole Cell Lysate

4 µL anti-TLK1 rabbit polyclonal antibody and 60 µg of Immunomagnetic beads Protein G.

Primary antibody:
Anti-TLK1 rabbit polyclonal antibody, at 1:100 dilution

Secondary antibody:
Dylight 800-labeled antibody to rabbit IgG (H+L), at 1:5000 dilution

Developed using the odssey technique.
Performed under reducing conditions.

Predicted band size: 87 kDa
Observed band size: 87 kDa