

CBX5 Antibody, Rabbit PAb, Antigen Affinity Purified



Sino Biological
Biological Solution Specialist

Catalog Number: 100788-T32

GENERAL INFORMATION

Immunogen:	A synthetic peptide corresponding to the center region of the Human CBX5
Preparation	Produced in rabbits immunized with a synthetic peptide corresponding to the center region of the Human CBX5, and purified by antigen affinity chromatography.
Ig Type:	Rabbit IgG
Specificity:	Human CBX5
Formulation:	0.2 µm filtered solution in PBS
Storage:	This antibody can be stored at 2°C-8°C for one month without detectable loss of activity. Antibody products are stable for twelve months from date of receipt when stored at -20°C to -80°C. Preservative-Free. Sodium azide is recommended to avoid contamination (final concentration 0.05%-0.1%). It is toxic to cells and should be disposed of properly. Avoid repeated freeze-thaw cycles.

APPLICATIONS

Applications:	WB
----------------------	----

RECOMMENDED CONCENTRATION

Western Blot	WB: 1:500-1:1000
---------------------	------------------

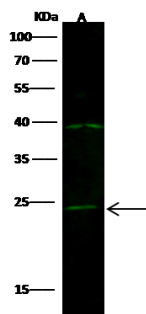
Please Note: Optimal concentrations/dilutions should be determined by the end user.

CBX5 Antibody, Rabbit PAb, Antigen Affinity Purified



Sino Biological
Biological Solution Specialist

Catalog Number: 100788-T32



Anti-CBX5 rabbit polyclonal antibody at 1:500 dilution

Lane A: A431 Whole Cell Lysate

Lysates/proteins at 30 μ g per lane.

Secondary

Goat Anti-Rabbit IgG H&L (Dylight800) at 1/10000 dilution.

Developed using the Odyssey technique.

Performed under reducing conditions.

Predicted band size:26 kDa

Observed band size:24 kDa