

CREB1 Antibody, Mouse MAb



Sino Biological
Biological Solution Specialist

Catalog Number: 10074-MM02T

GENERAL INFORMATION

Immunogen:	Recombinant Human CREB1 Protein (Catalog#10074-H10E)
Preparation	This product is a recombinant monoclonal antibody expressed from HEK293 cells.
Ig Type:	Mouse IgG2b
Clone ID:	02
Specificity:	Human CREB1
Formulation:	0.2 µm filtered solution in PBS
Storage:	This antibody can be stored at 2°C-8°C for one month without detectable loss of activity. Antibody products are stable for twelve months from date of receipt when stored at -20°C to -80°C. Preservative-Free. Avoid repeated freeze-thaw cycles.
Alternative Names:	CREB

APPLICATIONS

Applications:	FCM, ICC/IF
----------------------	-------------

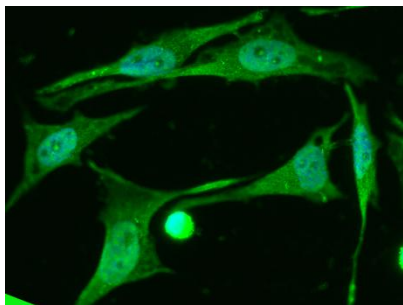
RECOMMENDED CONCENTRATION

ICC/IF	ICC/IF: 1:20-1:100
Flow Cytometry	FCM: 1:25-1:100

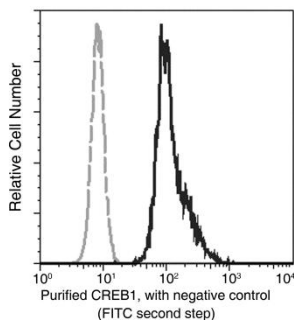
Please Note: Optimal concentrations/dilutions should be determined by the end user.



Catalog Number: 10074-MM02T



Immunofluorescence staining of Human CREB1 in HeLa cells. Cells were fixed with 4% PFA, permeabilized with 0.3% Triton X-100 in PBS, blocked with 10% serum, and incubated with Mouse anti-Human CREB1 monoclonal antibody (1:60) at 37°C 1 hour. Then cells were stained with the Alexa Fluor® 488-conjugated Goat Anti-mouse IgG secondary antibody (green) and counterstained with DAPI (blue). Positive staining was localized to nucleus.



Flow cytometric analysis of Human CREB1 expression on HepG2 cells. The cells were treated according to manufacturer's manual (BD Pharmingen™ Cat. No. 554714), stained with purified anti-Human CREB1, then a FITC-conjugated second step antibody. The fluorescence histograms were derived from gated events with the forward and side light-scatter characteristics of intact cells.

Flow cytometry was performed on a BD FACSCalibur flow cytometry system. Please refer to www.sinobiological.com/Flow-Cytometry-FACS-Protocols-a-750.html for technical protocols.