

# HSP90B1 Antibody, Rabbit PAb, Antigen Affinity Purified



Sino Biological  
Biological Solution Specialist

Catalog Number: 100613-T32

## GENERAL INFORMATION

<b>Immunogen:</b>	A synthetic peptide corresponding to the C-terminus of the Human HSP90B1
<b>Preparation</b>	Produced in rabbits immunized with a synthetic peptide corresponding to the C-terminus of the Human HSP90B1, and purified by antigen affinity chromatography.
<b>Ig Type:</b>	Rabbit IgG
<b>Specificity:</b>	Human Mouse (Species predicted to react based on 100% sequence homology)
<b>Formulation:</b>	0.2 µm filtered solution in PBS
<b>Storage:</b>	This antibody can be stored at 2°C-8°C for one month without detectable loss of activity. Antibody products are stable for twelve months from date of receipt when stored at -20°C to -80°C. Preservative-Free. Sodium azide is recommended to avoid contamination (final concentration 0.05%-0.1%). It is toxic to cells and should be disposed of properly. Avoid repeated freeze-thaw cycles.

## APPLICATIONS

**Applications:** WB

## RECOMMENDED CONCENTRATION

**Western Blot** WB: 1:500-1:2000

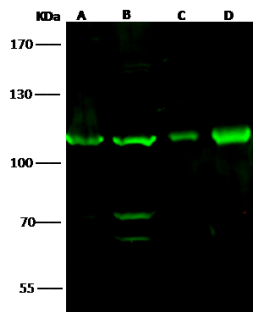
*Please Note: Optimal concentrations/dilutions should be determined by the end user.*

# HSP90B1 Antibody, Rabbit PAb, Antigen Affinity Purified



Sino Biological  
Biological Solution Specialist

Catalog Number: 100613-T32



Anti-HSP90B1 rabbit polyclonal antibody at  
1:500 dilution.

Lane A: HepG2 Whole Cell Lysate

Lane B: Jurkat Whole Cell Lysate

Lane C: Rat brain tissue lysate

Lane D: Mouse brain tissue lysate

Lysates/proteins at 30 ug per lane.

Secondary

Goat Anti-Rabbit IgG H&L (Dylight800) at  
1/10000 dilution.

Developed using the Odyssey technique.

Performed under reducing conditions.

Predicted band size:94 kDa

Observed band size:110 kDa

(We are unsure as to the identity of these  
extra bands.)