

VEGFR2/KDR/FIk-1/CD309 Antibody, Rabbit PAb, Antigen Affinity Purified



Sino Biological
Biological Solution Specialist

Catalog Number: 10012-T26

GENERAL INFORMATION

Immunogen:	Recombinant Human VEGFR2/KDR/FIk-1/CD309 Protein (Catalog#10012-H08H)
Preparation	Produced in rabbits immunized with purified, recombinant Human VEGFR2/KDR/FIk-1/CD309 (rh VEGFR2/KDR/FIk-1/CD309; Catalog#10012-H08H; NP_002244.1; Met1-Glu764). VEGFR2/KDR/FIk-1/CD309 specific IgG was purified by Human VEGFR2/KDR/FIk-1/CD309 affinity chromatography.
Ig Type:	Rabbit IgG
Specificity:	Human VEGFR2/KDR/FIk-1/CD309
Formulation:	0.2 µm filtered solution in PBS
Storage:	This antibody can be stored at 2°C-8°C for one month without detectable loss of activity. Antibody products are stable for twelve months from date of receipt when stored at -20°C to -80°C. Preservative-Free. Avoid repeated freeze-thaw cycles.
Alternative Names:	CD309, FIk-1, FLK1, VEGFR, VEGFR2

APPLICATIONS

Applications:	ELISA, IHC-P, ICC/IF
----------------------	----------------------

RECOMMENDED CONCENTRATION

IHC-P	IHC-P: 1:500-1:2000
ICC/IF	ICC/IF: 1:300-1:10000
ELISA	ELISA: 1:5000-1:10000 This antibody can be used at 1:5000-1:10000 with the appropriate secondary reagents to detect Human VEGFR2/KDR/FIk-1/CD309.

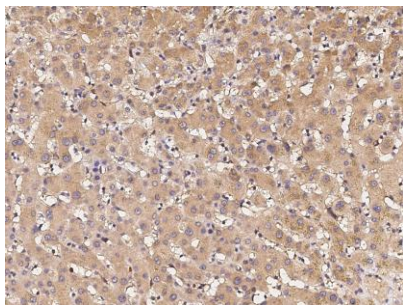
Please Note: Optimal concentrations/dilutions should be determined by the end user.

VEGFR2/KDR/FIk-1/CD309 Antibody, Rabbit PAb, Antigen Affinity Purified

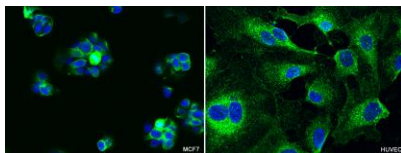


Sino Biological
Biological Solution Specialist

Catalog Number: 10012-T26



Immunochemical staining of human VEGFR2 in human liver with rabbit polyclonal antibody (1:1000, formalin-fixed paraffin embedded sections).



Immunofluorescence staining of VEGFR2 in MCF7 and HUVEC cells. Cells were fixed with 4% PFA, permeabilized with 0.3% Triton X-100 in PBS, blocked with 10% serum, and incubated with rabbit anti-human VEGFR2 polyclonal antibody (1:1000) at 4°C overnight. Then cells were stained with the Alexa Fluor®488-conjugated Goat Anti-rabbit IgG secondary antibody (green) and counterstained with DAPI (blue). Positive staining was localized to cytoplasm.