

Her2 / ERBB2 Antibody, Rabbit PAb, Antigen Affinity Purified



Sino Biological
Biological Solution Specialist

Catalog Number: 10004-T56

GENERAL INFORMATION	
Immunogen:	Recombinant Human Her2 / ERBB2 Protein (Catalog#10004-H08H)
Preparation	Produced in rabbits immunized with purified, recombinant Human Her2 / ERBB2 (rh Her2 / ERBB2; Catalog#10004-H08H; NP_004439.2; Met1-Thr652). Her2 / ERBB2 specific IgG was purified by Human Her2 / ERBB2 affinity chromatography.
Ig Type:	Rabbit IgG
Specificity:	Human Her2 / ERBB2
Formulation:	0.2 µm filtered solution in PBS
Storage:	This antibody can be stored at 2°C-8°C for one month without detectable loss of activity. Antibody products are stable for twelve months from date of receipt when stored at -20°C to -80°C. Preservative-Free. Avoid repeated freeze-thaw cycles.
Alternative Names:	CD340, ENV, ENVW, ERVWE1, HER-2, HER-2/neu, HER2, HERV-7q, HERV-W-ENV, HERV7Q, HERVW, HERVWENV, MLN 19, MLN19, NEU, NGL, TKR1
APPLICATIONS	
Applications:	WB, ELISA, IHC-P
RECOMMENDED CONCENTRATION	
IHC-P	IHC-P: 1:500-1:5000
Western Blot	WB: 1:500-1:2000
ELISA	ELISA: 1:5000-1:10000 This antibody can be used at 1:5000-1:10000 with the appropriate secondary reagents to detect Human Her2 / ERBB2.

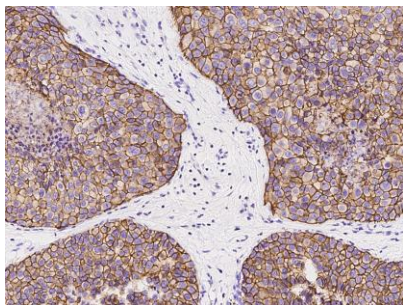
Please Note: Optimal concentrations/dilutions should be determined by the end user.

Her2 / ERBB2 Antibody, Rabbit PAb, Antigen Affinity Purified

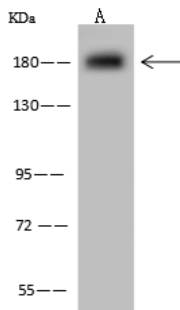


Sino Biological
Biological Solution Specialist

Catalog Number: 10004-T56



Immunochemical staining of human ErbB2 in human breast carcinoma with rabbit polyclonal antibody at 1:2000 dilution, formalin-fixed paraffin embedded sections.



Anti-ErbB2 rabbit polyclonal antibody at 1:500 dilution

Lane A: HeLa Whole Cell Lysate

Lysates/proteins at 30 µg per lane.

Secondary

Goat Anti-Rabbit IgG (H+L)/HRP at 1/10000 dilution.

Developed using the ECL technique.
Performed under reducing conditions.

Predicted band size: 138 kDa

Observed band size: kDa