

HER2 / ErbB2 / CD340 Antibody (PE), Rabbit MAb



Catalog Number: 10004-R511-P

EliteRmab® is a registered trademark of Sino Biological Inc.

GENERAL INFORMATION	
Immunogen:	Recombinant Human ErbB2 protein (Catalog#10004-H08H)
Reagents:	PE-conjugated Rabbit monoclonal antibody
Preparation	This antibody was obtained from a rabbit immunized with purified, human cell-derived, recombinant human ErbB2 / HER2 extracellular domain (rh ErbB2; Catalog#10004-H08H; NP_004439.2; Met 1-Thr 652) and conjugated with PE under optimum conditions, the unreacted PE was removed.
Ig Type:	Rabbit IgG
Clone ID:	511
Specificity:	Human ErbB2 / HER2 / CD340
Concentration:	10 µl/Test, 0.1 mg/ml
Formulation:	Aqueous solution containing 0.5% BSA and 0.1% sodium azide
Storage:	This antibody is stable for 12 months from date of receipt when stored at 2°C-8°C. Protected from prolonged exposure to light. Do not freeze! Sodium azide is toxic to cells and should be disposed of properly. Flush with large volumes of water during disposal.
APPLICATIONS	
Applications:	FCM, ICC/IF
RECOMMENDED CONCENTRATION	
ICC/IF	ICC/IF: 5-20 µg/mL

Please Note: Optimal concentrations/dilutions should be determined by the end user.

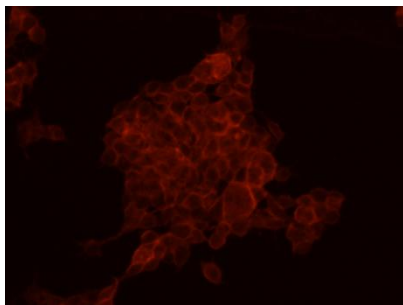
HER2 / ErbB2 / CD340 Antibody (PE), Rabbit MAb

Catalog Number: 10004-R511-P

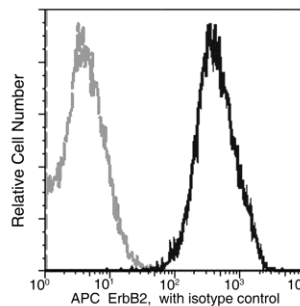
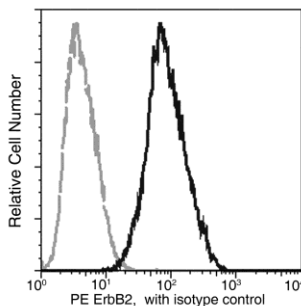


Sino Biological
Biological Solution Specialist

EliteRmab® is a registered trademark of Sino Biological Inc.



Immunofluorescence staining of Human ErbB2 in MCF7 cells. Cells were fixed with 4% PFA, blocked with 10% serum, and incubated with Rabbit anti-Human ErbB2 monoclonal antibody (PE-conjugated, 10 µg/ml) at 37°C 1 hour. Positive staining was localized to plasma membrane.



Analysis of anti-human ErbB2 on MCF-7 cells. MCF-7 cells were detached using 1X trypsin, washed, then stained with PE Rabbit anti-human ErbB2.

Flow cytometry was performed on a BD FACSCalibur flow cytometry system. Please refer to www.sinobiological.com/Flow-Cytometry-FACS-Protocols-a-750.html for technical protocols.