

**EGFR / HER1 / ErbB1 Antibody (APC),  
Rabbit MAb**

Catalog Number: 10001-RE01-A

EliteRmab® is a registered trademark of Sino Biological Inc.

**GENERAL INFORMATION**

<b>Immunogen:</b>	Recombinant Human EGFR / HER1 / ErbB1 protein (Catalog#10001-H08H)
<b>Reagents:</b>	APC-conjugated Rabbit monoclonal antibody
<b>Preparation</b>	This antibody was obtained from a rabbit immunized with purified, recombinant Human EGFR / HER1 / ErbB1 (rh EGFR / HER1 / ErbB1; Catalog#10001-H08H; NP_005219; Met1-Ser645) and conjugated with APC under optimum conditions, the unreacted APC was removed.
<b>Ig Type:</b>	Rabbit IgG
<b>Clone ID:</b>	E01
<b>Specificity:</b>	Human EGFR / HER1 / ErbB1
<b>Concentration:</b>	1 µl/Test, 0.1 mg/ml
<b>Formulation:</b>	PBS solution containing 0.5% BSA and 0.09% sodium azide
<b>Storage:</b>	This antibody can be stored at 2°C-8°C for twelve months without detectable loss of activity. Protected from prolonged exposure to light. Do not freeze ! Sodium azide is toxic to cells and should be disposed of properly. Flush with large volumes of water during disposal.
<b>Alternative Names:</b>	EGFR

**APPLICATIONS**

<b>Applications:</b>	FCM
----------------------	-----

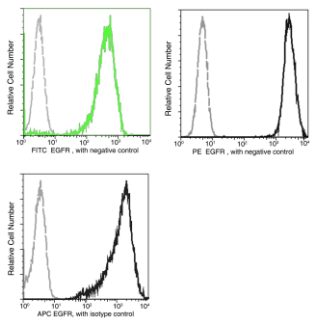
**RECOMMENDED CONCENTRATION***Please Note: Optimal concentrations/dilutions should be determined by the end user.*

# EGFR / HER1 / ErbB1 Antibody (APC), Rabbit MAb



Catalog Number: 10001-RE01-A

EliteRmab® is a registered trademark of Sino Biological Inc.



Profile of anti-EGFR reactivity on A431 cells  
analyzed by flow cytometry.

Flow cytometry was performed on a BD  
FACSCalibur flow cytometry system.  
Please refer to [www.sinobiological.com/Flow-Cytometry-FACS-Protocols-a-750.html](http://www.sinobiological.com/Flow-Cytometry-FACS-Protocols-a-750.html) for  
technical protocols.