

# Human TSLP Protein

Cat. No. TSP-HM201

## Description

<b>Source</b>	Recombinant Human TSLP Protein is expressed from HEK293 with hFc tag at the C-Terminus. It contains Tyr29-Gln159.
<b>Accession</b>	Q969D9-1
<b>Molecular Weight</b>	The protein has a predicted MW of 41.69 kDa. Due to glycosylation, the protein migrates to 38-42 kDa based on Tris-Bis PAGE result.
<b>Endotoxin</b>	Less than 1EU per µg by the LAL method.
<b>Purity</b>	> 95% as determined by Tris-Bis PAGE > 95% as determined by HPLC

## Formulation and Storage

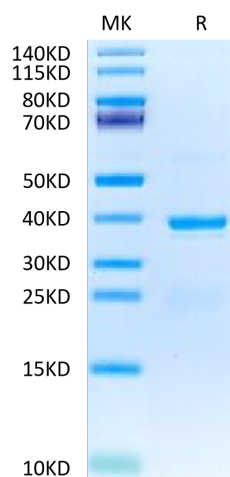
<b>Formulation</b>	Supplied as 0.22µm filtered solution in PBS (pH 7.4).
<b>Storage</b>	Valid for 12 months from date of receipt when stored at -80°C. Recommend to aliquot the protein into smaller quantities for optimal storage. Please minimize freeze-thaw cycles.

## Background

Thymic Stromal Lymphopoietin (TSLP) was originally identified as an activity from the conditioned medium of a mouse thymic stromal cell line that promoted the development of B cells. Cytokine that induces the release of T-cell-attracting chemokines from monocytes and, in particular, enhances the maturation of CD11c dendritic cells. Can induce allergic inflammation by directly activating mast cells.

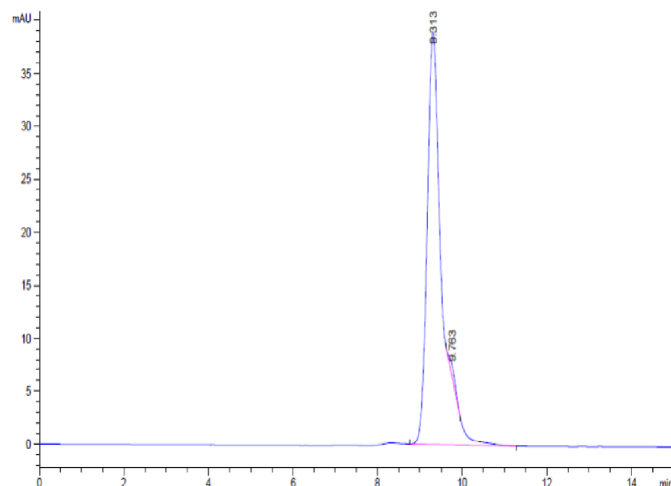
## Assay Data

### Tris-Bis PAGE



Human TSLP on Tris-Bis PAGE under reduced condition. The purity is greater than 95%.

### SEC-HPLC



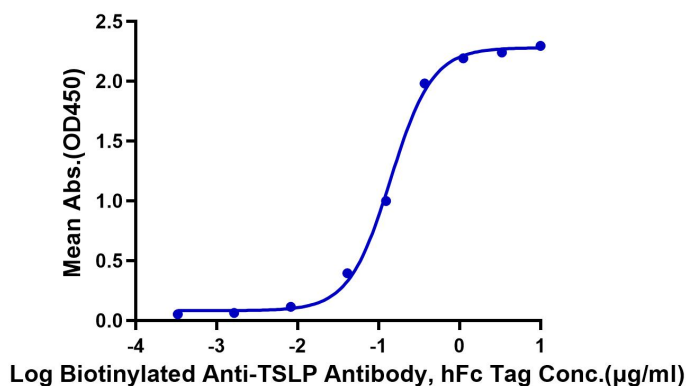
The purity of Human TSLP is greater than 95% as determined by SEC-HPLC.

## ELISA Data

## Assay Data

**Human TSLP, hFc Tag ELISA**

0.05µg Human TSLP, hFc Tag Per Well

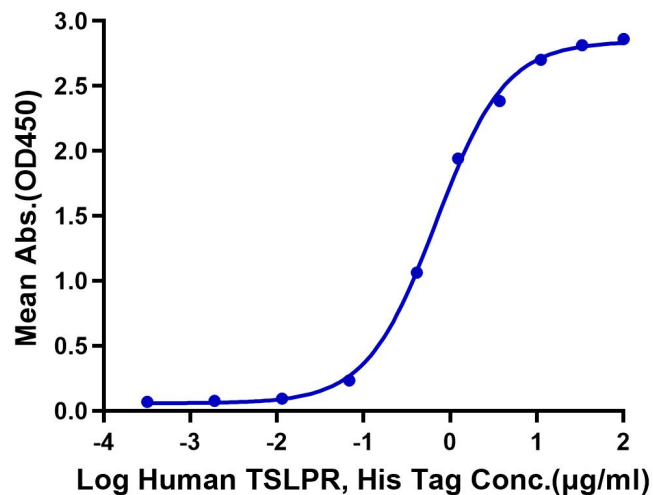


Immobilized Human TSLP, hFc Tag at 0.5µg/ml (100µl/Well) on the plate. Dose response curve for Biotinylated Anti-TSLP Antibody, hFc Tag with the EC50 of 0.14µg/ml determined by ELISA (QC Test).

## ELISA Data

**Human TSLP, hFc Tag ELISA**

0.1µg Human TSLP, hFc Tag Per Well



Immobilized Human TSLP, hFc Tag at 1µg/ml (100µl/well) on the plate. Dose response curve for Human TSLPR, His Tag with the EC50 of 0.69µg/ml determined by ELISA.