

# Human Latent TGF beta 2/TGFB2 Protein

Cat. No. TGF-HM102

## Description

<b>Source</b>	Recombinant Human Latent TGF beta 2/TGFB2 Protein is expressed from HEK293 with His tag at the N-Terminus. It contains Leu21-Ser414.
<b>Accession</b>	P61812-1
<b>Molecular Weight</b>	The protein has a predicted MW of 46.6 kDa. Due to glycosylation, the protein migrates to 40-60 kDa&12-13 kDa based on Tris-Bis PAGE result.
<b>Endotoxin</b>	Less than 1EU per µg by the LAL method.
<b>Purity</b>	> 95% as determined by Tris-Bis PAGE > 95% as determined by HPLC

## Formulation and Storage

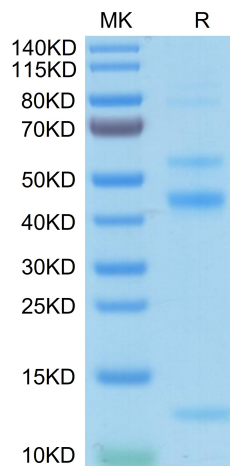
<b>Formulation</b>	Lyophilized from 0.22µm filtered solution in PBS (pH 7.4). Normally 8% trehalose is added as protectant before lyophilization.
<b>Reconstitution</b>	Centrifuge the tube before opening. Reconstituting to a concentration more than 100 µg/ml is recommended. Dissolve the lyophilized protein in distilled water.
<b>Storage</b>	-20 to -80°C for 12 months as supplied from date of receipt. -20 to -80°C for 3-6 months in unopened state after reconstitution. 2-8°C for 2-7 days after reconstitution. Recommend to aliquot the protein into smaller quantities for optimal storage. Please minimize freeze-thaw cycles.

## Background

Transforming growth factor beta(2) (TGF-beta(2)), a growth regulator of human lens epithelial cells (HLECs), also regulates the death of these cells. TGF-beta(2)-induced apoptosis in HLECs was preceded by an induction of reactive oxygen species (ROS) and a decrease in glutathione in the intracellular content, indicating that this factor induces oxidative stress in HLECs.

## Assay Data

### Tris-Bis PAGE



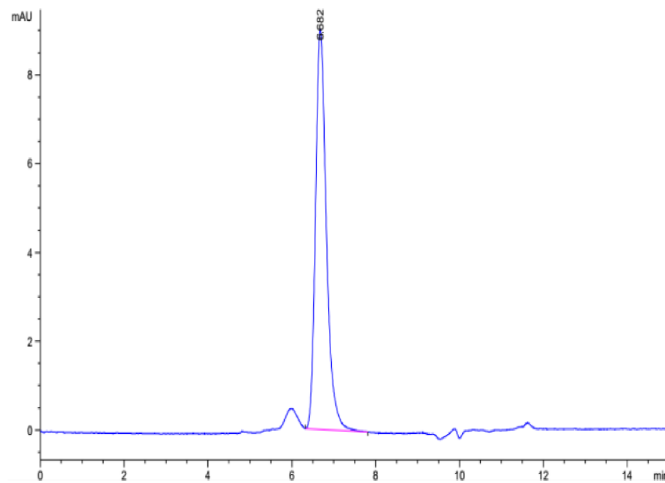
Human Latent TGF beta 2 on Tris-Bis PAGE under reduced condition. The purity is greater than 95%.

### SEC-HPLC

# Human Latent TGF beta 2/TGFB2 Protein

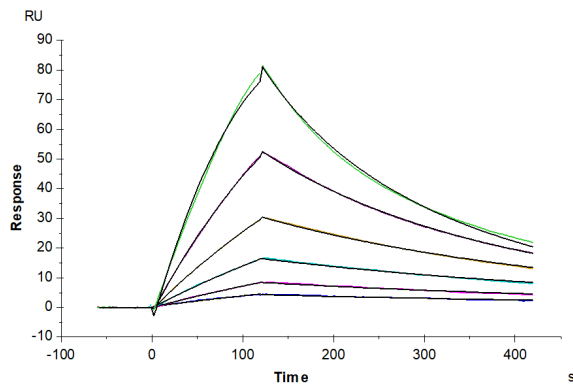
Cat. No. TGF-HM102

## Assay Data



The purity of Human Latent TGF beta 2 is greater than 95% as determined by SEC-HPLC.

## SPR Data



Human TGF-beta RII, hFc Tag captured on CM5 Chip via Protein A can bind Human Latent TGF beta 2, His Tag with an affinity constant of 2.21  $\mu$ M as determined in SPR assay (Biacore T200).