

# Biotinylated Human LDLR Protein

Cat. No. LDL-HM401B

## Description

<b>Source</b>	Recombinant Biotinylated Human LDLR Protein is expressed from HEK293 with His tag and Avi tag at the C-Terminus. It contains Ala22-Arg788.
<b>Accession</b>	P01130-1
<b>Molecular Weight</b>	The protein has a predicted MW of 87.6 kDa, Due to glycosylation, the protein migrates to 110-130 kDa based on Tris-Bis PAGE result.
<b>Endotoxin</b>	Less than 1EU per µg by the LAL method.
<b>Purity</b>	> 95% as determined by Tris-Bis PAGE > 95% as determined by HPLC

## Formulation and Storage

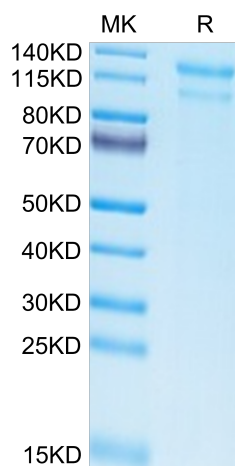
<b>Formulation</b>	Lyophilized from 0.22µm filtered solution in PBS (pH 7.4). Normally 8% trehalose is added as protectant before lyophilization.
<b>Reconstitution</b>	Centrifuge the tube before opening. Reconstituting to a concentration more than 100 µg/ml is recommended. Dissolve the lyophilized protein in distilled water.
<b>Storage</b>	-20 to -80°C for 12 months as supplied from date of receipt. -20 to -80°C for 3-6 months in unopened state after reconstitution. 2-8°C for 2-7 days after reconstitution. Recommend to aliquot the protein into smaller quantities for optimal storage. Please minimize freeze-thaw cycles.

## Background

The low density lipoprotein receptor (LDLR) is the founding member of the LDL R family of widely expressed cell surface scavenger receptors. It is a cell-surface receptor that recognizes the apoprotein B100 which is embedded in the phospholipid outer layer of LDL particles.

## Assay Data

### Tris-Bis PAGE



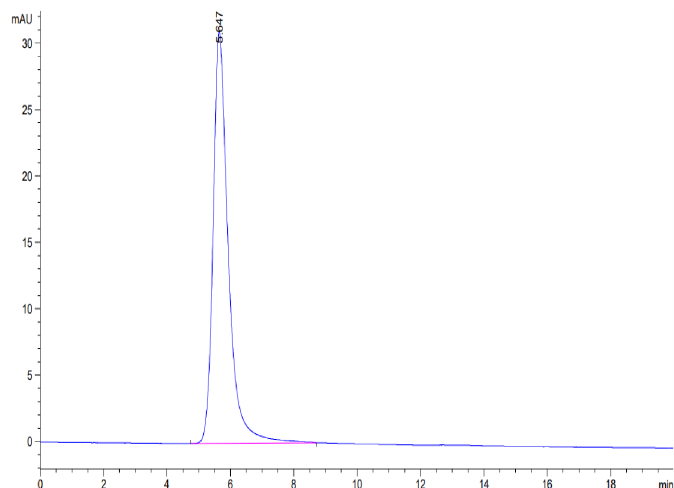
Biotinylated Human LDLR on Tris-Bis PAGE under reduced condition. The purity is greater than 95%.

### SEC-HPLC

# Biotinylated Human LDLR Protein

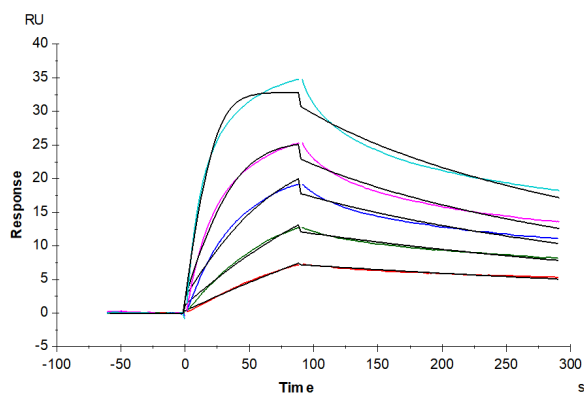
Cat. No. LDL-HM401B

## Assay Data



The purity of Biotinylated Human LDLR is greater than 95% as determined by SEC-HPLC.

## SPR Data



Biotinylated Human LDLR, His Tag immobilized on CM5 Chip can bind Human PCSK9, His Tag with an affinity constant of 0.23 nM as determined in SPR assay (Biacore T200).