

Human Latexin Protein

Cat. No. LAT-HE101



Description

Source	Recombinant Human Latexin Protein is expressed from E.coli with His tag at the N-Terminus. It contains Glu2-Glu222.
Accession	AAH05346
Molecular Weight	The protein has a predicted MW of 27.16 kDa. The protein migrates to 30-35 kDa based on Tris-Bis PAGE result.
Endotoxin	Less than 1EU per µg by the LAL method.
Purity	> 95% as determined by Tris-Bis PAGE > 95% as determined by HPLC

Formulation and Storage

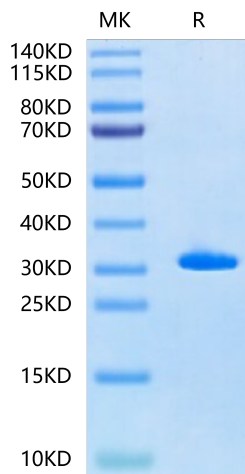
Formulation	Supplied as 0.22µm filtered solution in PBS (pH 7.4).
Storage	Valid for 12 months from date of receipt when stored at -80°C. Recommend to aliquot the protein into smaller quantities for optimal storage. Please minimize freeze-thaw cycles.

Background

Latexin, the endogenous protein inhibitor of the A/B subfamily of metallocarboxypeptidases, is expressed in small nociceptive neurons in sensory ganglia and in a subset of neurons in the telencephalon. Recently, the latexin (Lxn) gene was identified as a potential tumor suppressor in several types of solid tumors and lymphoma, and Lxn expression was found to be absent or downregulated in leukemic cells.

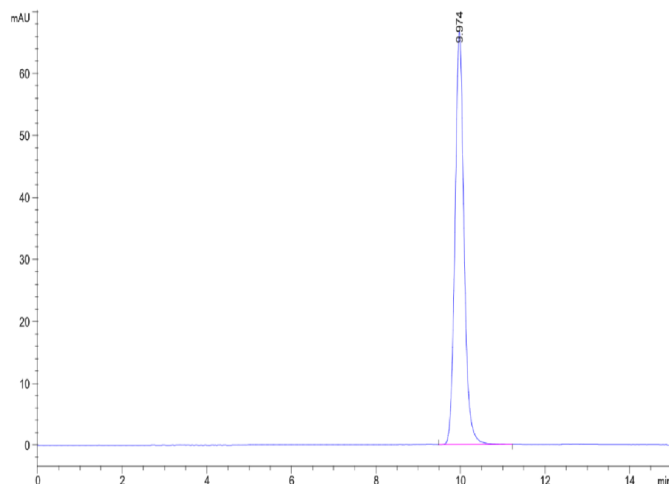
Assay Data

Tris-Bis PAGE



Human Latexin on Tris-Bis PAGE under reduced condition. The purity is greater than 95%.

SEC-HPLC



The purity of Human Latexin is greater than 95% as determined by SEC-HPLC.