

Human L1CAM Protein

Cat. No. LAM-HM101

Description

Source	Recombinant Human L1CAM Protein is expressed from HEK293 with His tag at the C-Terminus. It contains Ile20-Glu1120.
Accession	P32004-1
Molecular Weight	The protein has a predicted MW of 124.6 kDa. Due to glycosylation, the protein migrates to 150-180 kDa based on Tris-Bis PAGE result.
Endotoxin	Less than 1EU per µg by the LAL method.
Purity	> 95% as determined by Tris-Bis PAGE > 95% as determined by HPLC

Formulation and Storage

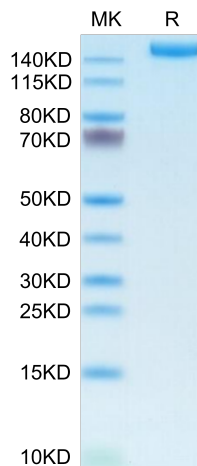
Formulation	Lyophilized from 0.22µm filtered solution in PBS (pH 7.4). Normally 8% trehalose is added as protectant before lyophilization.
Reconstitution	Centrifuge the tube before opening. Reconstituting to a concentration more than 100 µg/ml is recommended. Dissolve the lyophilized protein in distilled water.
Storage	-20 to -80°C for 12 months as supplied from date of receipt. -20 to -80°C for 3-6 months in unopened state after reconstitution. 2-8°C for 2-7 days after reconstitution. Recommend to aliquot the protein into smaller quantities for optimal storage. Please minimize freeze-thaw cycles.

Background

L1 cell adhesion molecule (L1CAM) is one of the first neural adhesion molecules described with important functions in the development of the nervous system. Subsequent work discovered that L1CAM is expressed in many human cancers and is often associated with bad prognosis. This is most likely due to the motility and invasion promoting function of L1CAM. L1CAM is a valuable diagnostic/prognostic marker and an attractive target for the therapy of several human cancers.

Assay Data

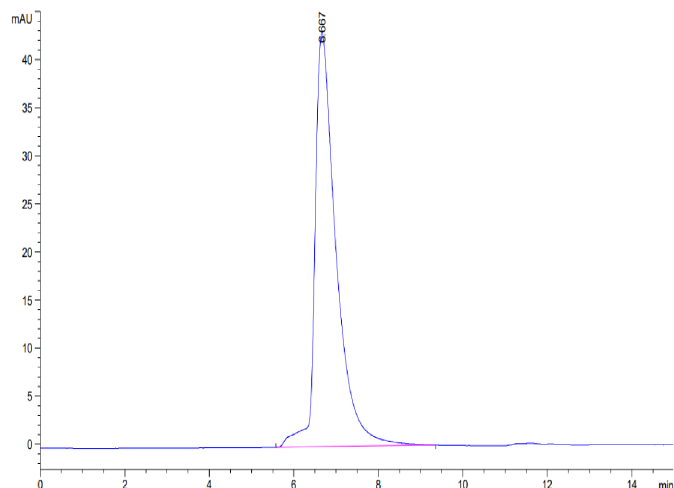
Tris-Bis PAGE



Human L1CAM on Tris-Bis PAGE under reduced condition. The purity is greater than 95%.

SEC-HPLC

Assay Data

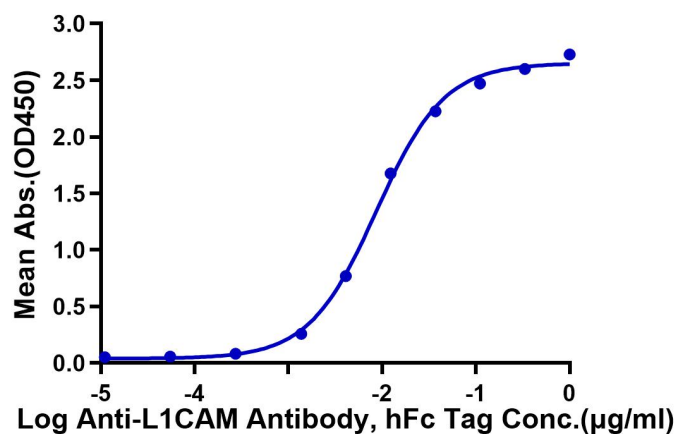


The purity of Human L1CAM is greater than 95% as determined by SEC-HPLC.

ELISA Data

Human L1CAM, His Tag ELISA

0.02µg Human L1CAM, His Tag Per Well



Immobilized Human L1CAM, His Tag at 0.2µg/ml (100µl/well) on the plate. Dose response curve for Anti-L1CAM Antibody, hFc Tag with the EC50 of 8.7ng/ml determined by ELISA.