

Human IL-23R Protein

Cat. No. ILR-HM323

Description

| | |
|-------------------------|---|
| Source | Recombinant Human IL-23R Protein is expressed from HEK293 with mFc (IgG1) tag at the C-Terminus. It contains Gly24-Gly355. |
| Accession | Q5VWK5-1 |
| Molecular Weight | The protein has a predicted MW of 63.7 kDa. Due to glycosylation, the protein migrates to 80-115 kDa based on Tris-Bis PAGE result. |
| Endotoxin | Less than 1EU per μ g by the LAL method. |
| Purity | > 95% as determined by Tris-Bis PAGE > 95% as determined by HPLC |

Formulation and Storage

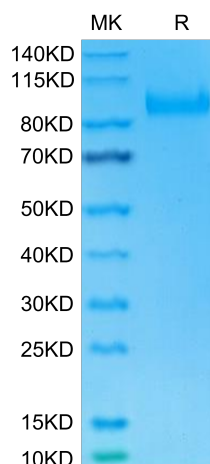
| | |
|-----------------------|---|
| Formulation | Lyophilized from 0.22 μ m filtered solution in PBS (pH 7.4). Normally 8% trehalose is added as protectant before lyophilization. |
| Reconstitution | Centrifuge the tube before opening. Reconstituting to a concentration more than 100 μ g/ml is recommended. Dissolve the lyophilized protein in distilled water. |
| Storage | -20 to -80°C for 12 months as supplied from date of receipt. -20 to -80°C for 3-6 months in unopened state after reconstitution. 2-8°C for 2-7 days after reconstitution. Recommend to aliquot the protein into smaller quantities for optimal storage. Please minimize freeze-thaw cycles. |

Background

Interleukin 23 (IL-23) is a heterodimeric cytokine composed of two disulfide-linked subunits, a p19 subunit that is unique to IL-23, and a p40 subunit that is shared with IL-12. The functional IL-23 receptor complex consists of two receptor subunits, the IL-12 receptor beta 1 subunit (IL-12 R beta 1) and the IL-23-specific receptor subunit (IL-23 R). This receptor associates with IL12RB1 to form the interleukin-23 receptor. Binds IL23 and mediates T-cells, NK cells and possibly certain macrophage/myeloid cells stimulation probably through activation of the Jak-Stat signaling cascade.

Assay Data

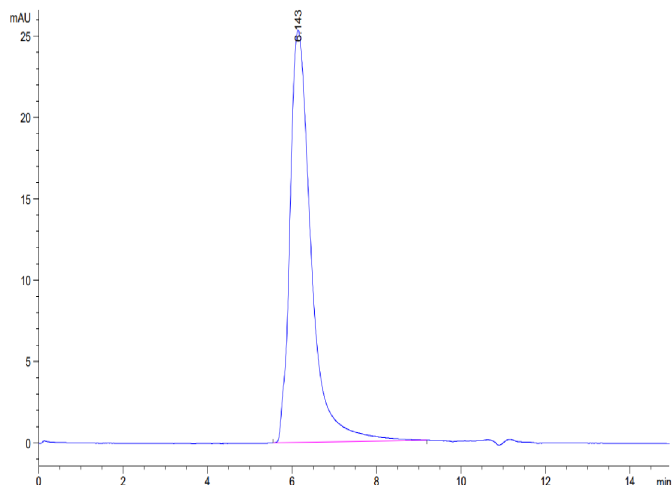
Tris-Bis PAGE



Human IL-23R on Tris-Bis PAGE under reduced condition. The purity is greater than 95%.

SEC-HPLC

Assay Data

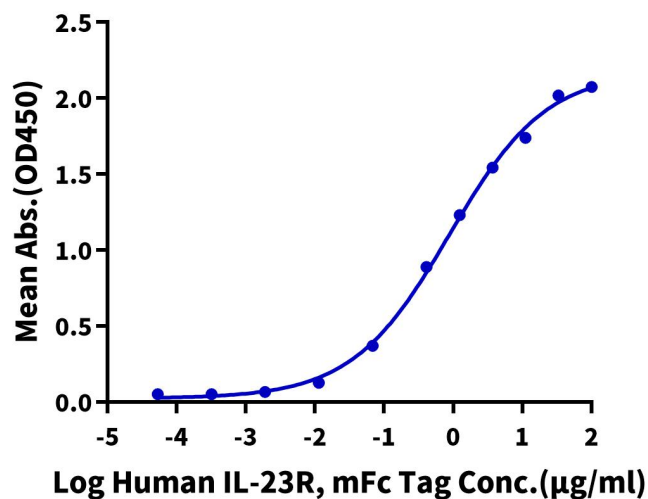


The purity of Human IL-23R is greater than 95% as determined by SEC-HPLC.

ELISA Data

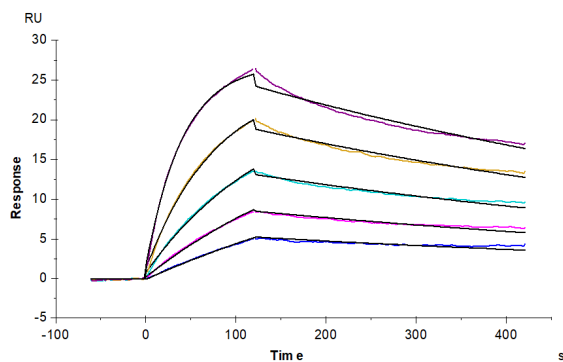
Human IL-23R, mFc Tag ELISA

0.5µg Human IL-23 alpha&Mouse IL-12, His Tag Per Well



Immobilized Human IL-23 alpha&Mouse IL-12, His Tag at 5µg/ml (100µl/Well) on the plate. Dose response curve for Human IL-23R, mFc Tag with the EC50 of 0.88µg/ml determined by ELISA (QC Test).

SPR Data



Human IL-23R, mFc Tag captured on CM5 Chip via Anti-Mouse Antibody can bind Human IL-23 alpha&IL-12 beta, His Tag with an affinity constant of 11.09 nM as determined in SPR assay (Biacore T200).