

Human Her2/ErbB2 Protein

Cat. No. HER-HM202

Description

Source	Recombinant Human Her2/ErbB2 Protein is expressed from HEK293 with hFc tag at the C-Terminus. It contains Thr23-Thr652.
Accession	P04626-1
Molecular Weight	The protein has a predicted MW of 96.1 kDa. Due to glycosylation, the protein migrates to 100-120 kDa based on Tris-Bis PAGE result.
Endotoxin	Less than 1EU per μg by the LAL method.
Purity	> 95% as determined by Tris-Bis PAGE > 95% as determined by HPLC

Formulation and Storage

Formulation	Lyophilized from 0.22 μm filtered solution in PBS (pH 7.4). Normally 8% trehalose is added as protectant before lyophilization.
Reconstitution	Centrifuge the tube before opening. Reconstituting to a concentration more than 100 $\mu\text{g}/\text{ml}$ is recommended. Dissolve the lyophilized protein in distilled water.
Storage	-20 to -80°C for 12 months as supplied from date of receipt. -20 to -80°C for 3-6 months in unopened state after reconstitution. 2-8°C for 2-7 days after reconstitution. Recommend to aliquot the protein into smaller quantities for optimal storage. Please minimize freeze-thaw cycles.

Background

ErbB2, also called Neu and Her2 (human epidermal growth factor receptor 2), is a type I membrane glycoprotein that is a member of the ErbB family of tyrosine kinase receptors. ErbB family members serve as receptors for the epidermal growth factor (EGF) family of growth factors. Upon ERBB2 activation, the MEMO1-RHOA-DIAPH1 signaling pathway elicits the phosphorylation and thus the inhibition of GSK3B at cell membrane. This prevents the phosphorylation of APC and CLASP2, allowing its association with the cell membrane.

Assay Data

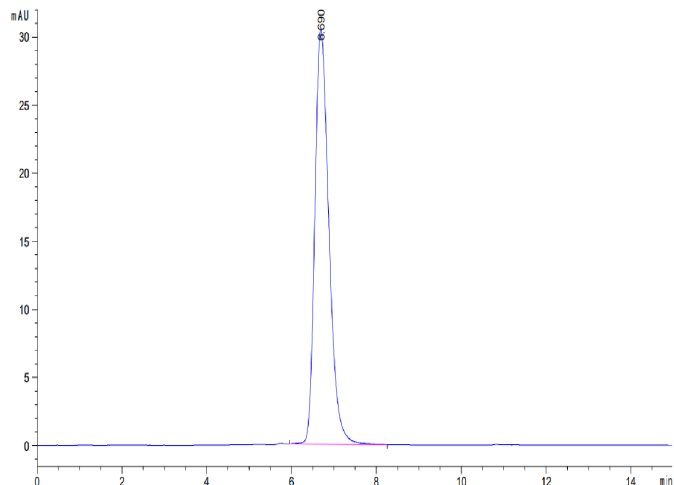
Tris-Bis PAGE



Human Her2 on Tris-Bis PAGE under reduced condition. The purity is greater than 95%.

SEC-HPLC

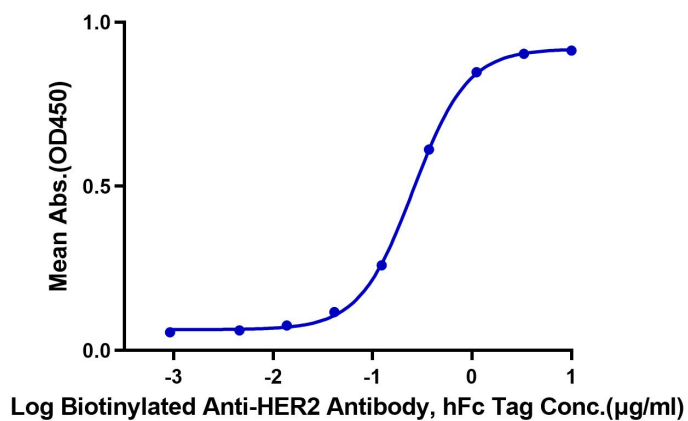
Assay Data



The purity of Human Her2 is greater than 95% as determined by SEC-HPLC.

ELISA Data

Human Her2, hFc Tag ELISA
0.5µg Human Her2, hFc Tag Per Well



Immobilized Human Her2, hFc Tag at 5µg/ml (100µl/well) on the plate. Dose response curve for Biotinylated Anti-Her2 Antibody , hFc Tag with the EC50 of 0.26µg/ml determined by ELISA.