

# Human GIP Protein

Cat. No. GIP-HM201

## Description

<b>Source</b>	Recombinant Human GIP Protein is expressed from HEK293 with hFc tag at the C-Terminus. It contains Glu22-Gln93.
<b>Accession</b>	P09681
<b>Molecular Weight</b>	The protein has a predicted MW of 34.9 kDa. Due to glycosylation, the protein migrates to 40-50 kDa based on Tris-Bis PAGE result.
<b>Endotoxin</b>	Less than 1EU per µg by the LAL method.
<b>Purity</b>	> 95% as determined by Tris-Bis PAGE > 95% as determined by HPLC

## Formulation and Storage

<b>Formulation</b>	Lyophilized from 0.22µm filtered solution in PBS (pH 7.4). Normally 8% trehalose is added as protectant before lyophilization.
<b>Reconstitution</b>	Centrifuge the tube before opening. Reconstituting to a concentration more than 100 µg/ml is recommended. Dissolve the lyophilized protein in distilled water.
<b>Storage</b>	-20 to -80°C for 12 months as supplied from date of receipt. -20 to -80°C for 3-6 months in unopened state after reconstitution. 2-8°C for 2-7 days after reconstitution. Recommend to aliquot the protein into smaller quantities for optimal storage. Please minimize freeze-thaw cycles.

## Background

The potential application of glucose-dependent insulinotropic polypeptide (gastric inhibitory polypeptide, GIP) in the management of obesity and type 2 diabetes has been controversial. Initial interest in the therapeutic use of GIP was dampened by evidence that its insulinotropic activity was reduced in type 2 diabetes and by reports that it increased glucagon secretion and adipose deposition in non-diabetic individuals.

## Assay Data

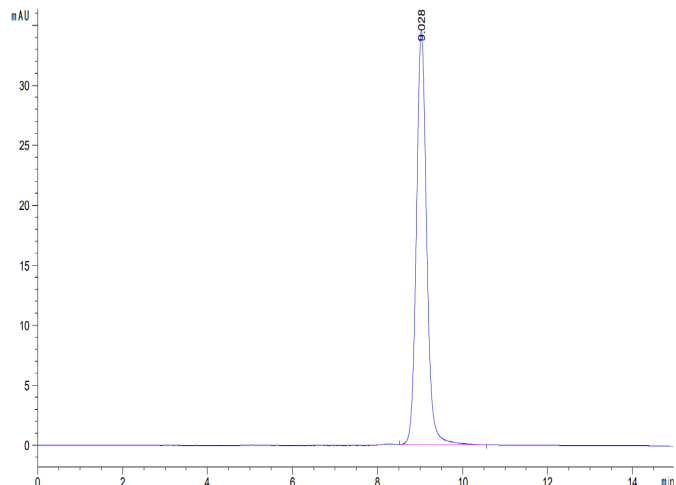
### Tris-Bis PAGE



Human GIP on Tris-Bis PAGE under reduced condition. The purity is greater than 95%.

### SEC-HPLC

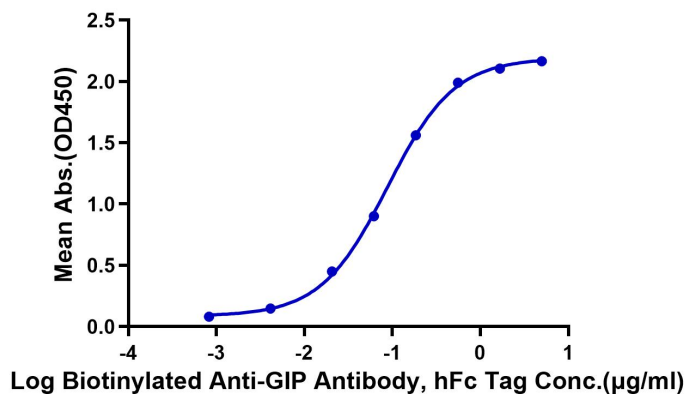
Assay Data



The purity of Human GIP is greater than 95% as determined by SEC-HPLC.

ELISA Data

**Human GIP, hFc Tag ELISA**  
0.05µg Human GIP, hFc Tag Per Well



Immobilized Human GIP, hFc Tag at 0.5µg/ml (100µl/well) on the plate. Dose response curve for Biotinylated Anti-GIP Antibody, hFc Tag with the EC50 of 88.1ng/ml determined by ELISA.