

# Mouse EphB3 Protein

Cat. No. EPH-MM1B3



## Description

<b>Source</b>	Recombinant Mouse EphB3 Protein is expressed from HEK293 with His tag at the C-Terminus. It contains Leu30-Leu554.
<b>Accession</b>	P54754
<b>Molecular Weight</b>	The protein has a predicted MW of 58.4 kDa. Due to glycosylation, the protein migrates to 65-70 kDa based on Tris-Bis PAGE result.
<b>Endotoxin</b>	Less than 1EU per µg by the LAL method.
<b>Purity</b>	> 95% as determined by Tris-Bis PAGE > 95% as determined by HPLC

## Formulation and Storage

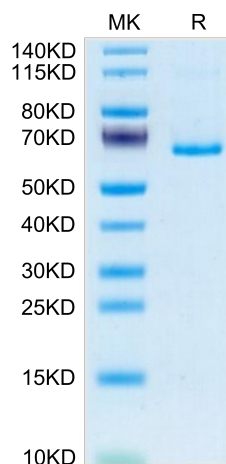
<b>Formulation</b>	Lyophilized from 0.22µm filtered solution in PBS (pH 7.4). Normally 8% trehalose is added as protectant before lyophilization.
<b>Reconstitution</b>	Centrifuge the tube before opening. Reconstituting to a concentration more than 100 µg/ml is recommended. Dissolve the lyophilized protein in distilled water.
<b>Storage</b>	-20 to -80°C for 12 months as supplied from date of receipt. -20 to -80°C for 3-6 months in unopened state after reconstitution. 2-8°C for 2-7 days after reconstitution. Recommend to aliquot the protein into smaller quantities for optimal storage. Please minimize freeze-thaw cycles.

## Background

Although EphB3 expression is down-regulated in colorectal cancer (CRC) cells compared with normal intestinal epithelial cells. EphB3 is down-regulated in CRC compared to normal mucosa. Hypermethylation of CpG island is contributed to downregulation of EphB3 in CRC. EphB3 expression in tumor cells may be a useful prognostic indicator for patients with CRC.

## Assay Data

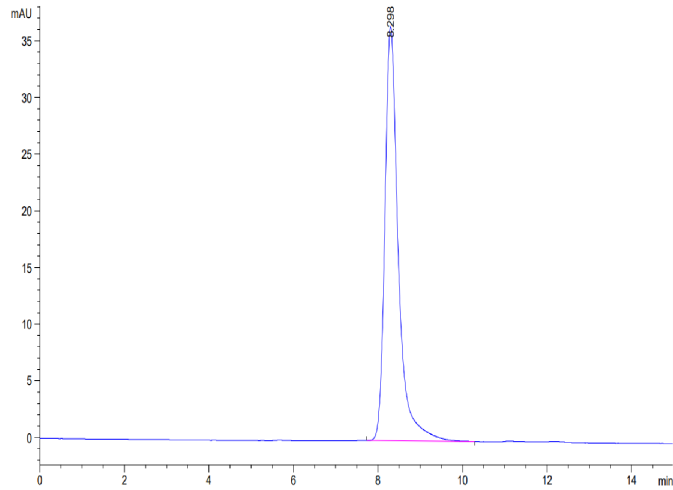
### Tris-Bis PAGE



Mouse EphB3 on Tris-Bis PAGE under reduced condition. The purity is greater than 95%.

### SEC-HPLC

Assay Data



The purity of Mouse EphB3 is greater than 95% as determined by SEC-HPLC.