

Human Claudin 6 Protein-VLP

Cat. No. CLD-HM006



Description

Source	Recombinant Full length Human Claudin 6 Protein-VLP is expressed from HEK293. It contains Met1-Val220.
Accession	P56747
Molecular Weight	The target protein has a predicted MW of 24.5 kDa.
Endotoxin	Less than 1EU per µg by the LAL method.
Purity	> 95% as determined by HPLC.

Formulation and Storage

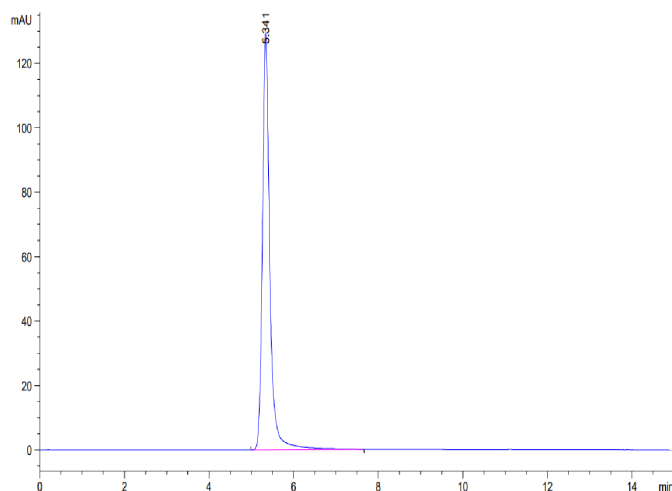
Formulation	Lyophilized from 0.22µm filtered solution in PBS (pH 7.4). Normally 8% trehalose is added as protectant before lyophilization.
Reconstitution	Centrifuge the tube before opening. Reconstituting to a concentration more than 100 µg/ml is recommended. Dissolve the lyophilized protein in distilled water.
Storage	-20°C or lower for 12 months as supplied from date of receipt. 2-8°C for 2-7 days after reconstitution. Recommend to aliquot the protein into smaller quantities for optimal storage. Please minimize freeze-thaw cycles.

Background

Claudin-6 is a multipass transmembrane protein in the Claudin family. Claudin-6 is expressed by epithelial cells where it participates in tissue development and the maintenance of tight junction integrity. Human Claudin-6 shares 88% and 86% amino acid sequence identity with mouse and rat Claudin-6, respectively.

Assay Data

SEC-HPLC



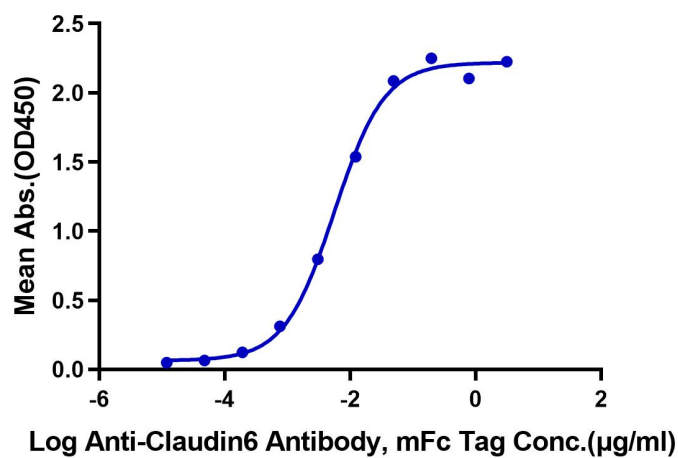
The purity of Human Claudin 6 VLP is greater than 95% as determined by SEC-HPLC.

ELISA Data

Assay Data

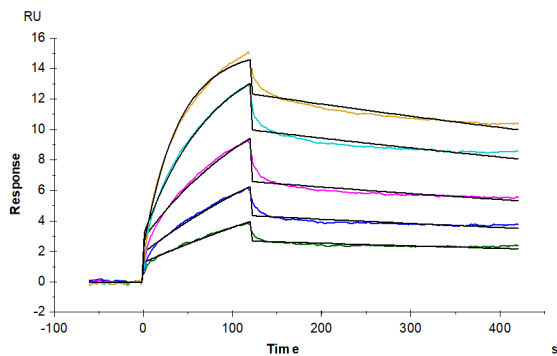
Human Claudin 6 VLP ELISA

0.5µg Human Claudin 6 VLP Per Well



Immobilized Human Claudin 6 VLP at 5µg/ml (100µl/Well). Dose response curve for Anti-Claudin 6 Antibody, mFc Tag with the EC50 of 5.6ng/ml determined by ELISA (QC Test).

SPR Data



Human Claudin 6 VLP immobilized on CM5 Chip can bind Anti-Claudin 6 Antibody with an affinity constant of 0.36 nM as determined in SPR assay (Biacore T200).